



Education Department, UT Chandigarh

Critical and Creative Thinking

English Practice Booklet
Class: 9



राज्य शैक्षिक अनुसंधान और प्रशिक्षण परिषद्
STATE COUNCIL OF EDUCATIONAL RESEARCH AND TRAINING
SECTOR-32 UT CHANDIGARH



Websites/links to download CCT Resource Material

CCT Tracker:

- URL: <https://pisa.diksha.gov.in>
- User Id: utcschools
- Password: Utcschools@01

SE Shagun Portal:

- <http://pisa.seshagun.gov.in/codes.html>
- <http://pisa.seshagun.gov.in/?AspxAutoDetectCookieSupport=1>
- <http://pisa.seshagun.gov.in/cct/>

DIKSHA:

- <http://diksha.gov.in>
- QR code and link for CCT Weekly- R5Z7P5
- <https://diksha.gov.in/get/dial/R5Z7P5>

OECD – PISA:

- <https://www.oecd.org/pisa/>
- <https://www.oecd.org/pisa/publications/>

Learning Outcomes of the practice booklet:

The learner will be able to

- i. Locate information: The questions asked will enable the learner to locate the required information.
- ii. Identify the main idea
- iii. Select relevant information
- iv. Process information in logical manner
- v. Reflect on the content of the passage
- vi. Interpret the text: the learners will be able to comprehend the literal and inferred meaning, identifying the main idea of text or paragraphs, and guess vocabulary from context.
- vii. Present viewpoints: The learner will be able to connect this information with his/her previous information and form individual viewpoints.
- viii. The learner will develop key reading sub-skills such as skimming and scanning
- ix. Personalize and ask compelling questions
- x. Enjoy inputs in the given contexts to understand, infer, interpret and appreciate.
- xi. Learn uses of language in different perspectives.
- xii. Read stories and literary texts-both fiction and non-fiction with understanding for pleasure and enjoyment.
- xiii. Correlate the text with his personal life experience.
- xiv. Evaluate the text, understands and develops moral sense of right and wrong to be a good human being.
- xv. Collect evidences and discusses for reading autobiographies, history and science based texts.
- xvi. Analyze and appreciates the point of view reflected in the text.
- xvii. Consult /refer to dictionary and books for academic and other purposes.
- xviii. Identify and uses the significant literary figurative meaning of words and phrases given in the text to enhance his vocabulary.

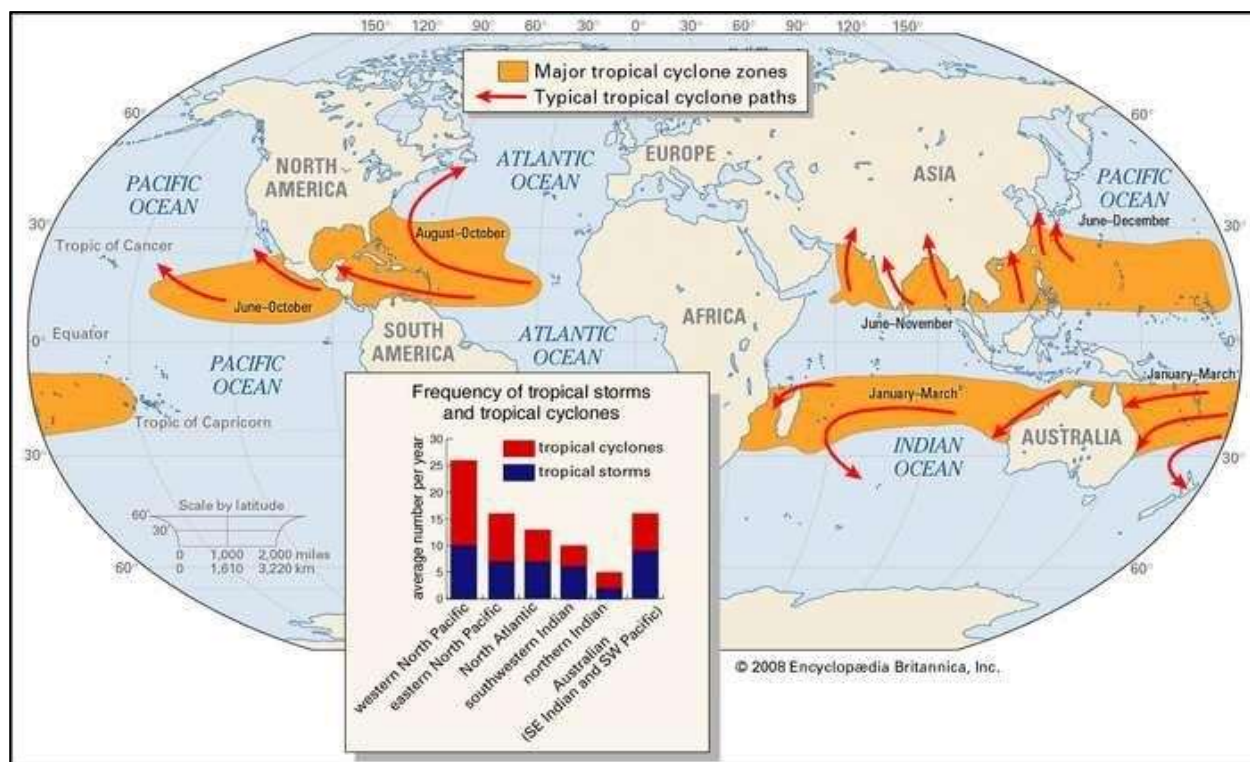
LEARNING COMPETENCIES:

- Problem Solving
- Critical Thinking
- Communication
- Creative Thinking
- Rational Thinking
- Reasoning
- Interpersonal skills
- Self-learning

LEARNING DIMENSIONS:

- Mathematical
- Scientific
- Global dimensions
- Demographic
- Cultural dimension
- Moral
- Experiential

Worksheet 1



Read the following passage carefully and answer the questions given below:

Tropical oceans spawn approximately 80 tropical storms annually, and about two-thirds are severe (category 1 or higher on the Saffir-Simpson scale of intensity). Almost 90 percent of these storms form within 20° north or south of the Equator. Pole ward of those latitudes, sea surface temperatures are too cool to allow tropical cyclones to form, and mature storms moving that far north or south will begin to dissipate. Only two tropical ocean basins do not support tropical cyclones, because they lack waters that are sufficiently warm. The Peru Current in the eastern South Pacific and the Benguela Current in the South Atlantic carry cool water Equatorward from higher latitudes and so deter tropical cyclone development. The Pacific Ocean generates the greatest number of tropical storms and cyclones. The most powerful storms, sometimes called super typhoons, occur in the western Pacific. The Indian Ocean is second in the total number of storms, and the Atlantic Ocean ranks third. Tropical cyclones are warm season phenomena. The peak frequency of these storms occurs after the maximum in solar radiation is received for the year, which occurs on June 22 in the Northern Hemisphere and December 22 in the Southern Hemisphere. The ocean

surface reaches its maximum temperature several weeks after the solar radiation maximum, so most tropical cyclones occur during the late summer to early fall—that is, from July to September in the Northern Hemisphere and from January to March in the Southern Hemisphere. And the winds move clockwise in Southern Hemisphere while anti clockwise in the North.

The 2020 North Indian Ocean cyclone season is an ongoing event in the annual cycle of tropical cyclone formation. The North Indian Ocean cyclone season has no official bounds, but cyclones tend to form between April and November, with peaks in May and October. These dates conventionally delimit the period of each year when most tropical cyclones form in the northern Indian Ocean. The season began on May 16 with the designation of Depression BOB 01 in the Bay of Bengal, later to become Super Cyclonic Storm Amphan, one of the strongest storms in the bay recorded and the costliest storm on record in the basin.

In the Northern Hemisphere, east of the Horn of Africa and west of the Malay Peninsula, there are two main seas in the North Indian Ocean — the Arabian Sea to the west of the Indian subcontinent, abbreviated *ARB* by the India Meteorological Department (IMD); and the Bay of Bengal to the east, abbreviated *BOB* by the IMD.



The official Regional Specialized Meteorological Centre in this basin is the India Meteorological Department (IMD), while the Joint Typhoon Warning Center releases unofficial advisories. On average, three to four cyclonic storms form in this basin every season. This is a table of all storms in the 2020 North Indian Ocean cyclone season. It mentions all of the season's storms and their names, duration, peak intensities (according to the IMD storm scale), damage, and death totals. Damage and death totals include the damage and deaths caused when that storm was a precursor wave or extra tropical low, and all of the damage figures are in 2020 USD.

Name	Dates active	Peak classification	Sustained wind speeds	Pressure	Areas affected	Damage (USD)	Deaths	Refs
Amphan	May 16 – 21	Super cyclonic storm	240 km/h (150 mph)	920 hPa (27.17 in Hg)	Sri Lanka, India, Bangladesh, Bhutan	\$13.6 billion	128	[17]
ARB 01	May 29 – 31	Depression	45 km/h (30 mph)	1000 hPa (29.53 in Hg)	Oman, Yemen	Unknown	3	
Nisarga	June 1 – 4	Severe cyclonic storm	110 km/h (70 mph)	990 hPa (29.23 in Hg)	West India	\$665 million	6	[18]

1. Where the tropical cyclones are mostly produced?
2. Why do super typhoons occur in the Pacific Ocean?
3. Give two difference between the cyclones occurring in the two hemispheres.
4. Name the costliest storm and its place of origin.
5. The cyclones in Yemen accounted for 13.6 billion in damages. True / False
6. Fill in the blanks with the correct option:
The most active months of the Northern cyclonic season is.....
 - a. June July
 - b. May October
 - c. September October
 - d. all the above

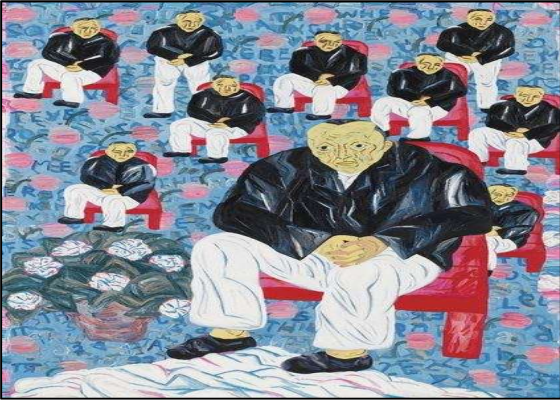
7. The depression in May led to the formation ofcyclone.
- a. Fani
 - b. Amphan
 - c. Katrina
 - d. Nisarga
8. The Joint Typhoon Warning Centre releases
- a. press notes
 - b. survey reports
 - c. advisories
 - d. reviews
9. Find the word in the passage which means the same as produce.
10. Calculate from the given table, the number of hours of the most active dates (inclusive) of a Cyclone.

Let us solve:

For a crossword link log on to -

https://wordmint.com/public_puzzles/104875

Worksheet 2



Read the following news report carefully:

Mumbai: November 30 : Amrita Sher-Gil's "The Little Girl in Blue" fetched a whopping Rs 18.69 crore at Sotheby's maiden auction in India—"Boundless:India", setting a record price for the artist in the country. The 1934 artwork, a portrait of Sher-Gil's then eight-year-old cousin Babit, was estimated at Rs 8.5 crore-12.5 crore.

First exhibited in 1937 as part of the artist's debut show in Lahore, the painting was bought by art historian Charles Fabri, and was brought back on the market after eight long decades by Sotheby's, making it only the seventh oil painting by her to be offered anywhere in the world.

"This is a milestone moment for Sotheby's; the realisation of a vision we have been planning for many years. "The enthusiasm that we have seen for the sale and for our supporting exhibitions in Delhi and Mumbai, stands us in very good stead for the future," Edward Gibbs, Sotheby's Chairman for the Middle East and India, said.

Record price was also achieved for an untitled 1950s bronze sculpture by Sadanand Bakre. At Rs 1.88 crore, it fetched the highest price for any 20th-century Indian sculpture. It was estimated at Rs 40-60 lakh. Contemporary artist Arpita Singh's 'Men Sitting, Men Standing' estimated at Rs 1.20-1.80 crore also sold over the high estimate for Rs 1.88 crore.

With an upper estimate of Rs 1.10 crore, Francis Newton Souza's 1961 painting of the London skyline featuring the St Paul's Cathedral under what looks like a stormy sky, did exceedingly well by fetching Rs 1.88 crore.

Leading the lot was Tyeb Mehta's 'Durga Mahisasura Mardini', which sold for Rs 20.49 crores, a little above the painting's lower estimate of Rs 20 crore.

The auction house noted that over 75 per cent of sold lots achieved prices above their pre-sale high estimates, fetching a total of Rs 55.40 crore.

"The sale has enabled us to connect with scores of new and existing clients, and at the same time really deepen our understanding of the market here. We look forward to planning our next steps in the region," Yamini Mehta, Sotheby's International Head of Indian and South Asian Art, said. PTI

Answer the following questions:

1. The Sotheby's auction was held in

- a. Delhi
- b. Mumbai
- c. London
- d. Middle East

2. The Exhibition was titled

- a. Men Sitting, Men Standing
- b. Untitled
- c. Boundless India
- d. South Asian Art

3. The Girl in Blue was namely

- a. Amrita
- b. Arpita
- c. Yamini
- d. Babit

4. The Art work which crossed the 50 Lakh estimate was
- a. a bronze sculpture
 - b. oil painting
 - c. self portrait
 - d. Both b and c
5. The response to the maiden exhibit was
- a. terribly disappointing
 - b. overwhelming
 - c. enthusiastic
 - d. both b and c.
6. The Art work with the highest bid that crossed its estimated worth was by
- a. Sadanand Bakr
 - b. Tyeb Mehta
 - c. Edward Gibbs
 - d. Francis Newton Souza
7. St'Paul's Cathedral featured prominently in the work of
- a. F.N Souza
 - b. Tyeb Mehta
 - c. Charles Fabri
 - d. Sotheby
8. The estimated sale of the auction amounted to
- a. 60 Crore
 - b. 1.88 Crore
 - c. 55.40 Crore
 - d. 40 – 60 lakh
9. The word in the passage which means same as very large
- a. whopping
 - b. estimated
 - c. decades
 - d. boundless

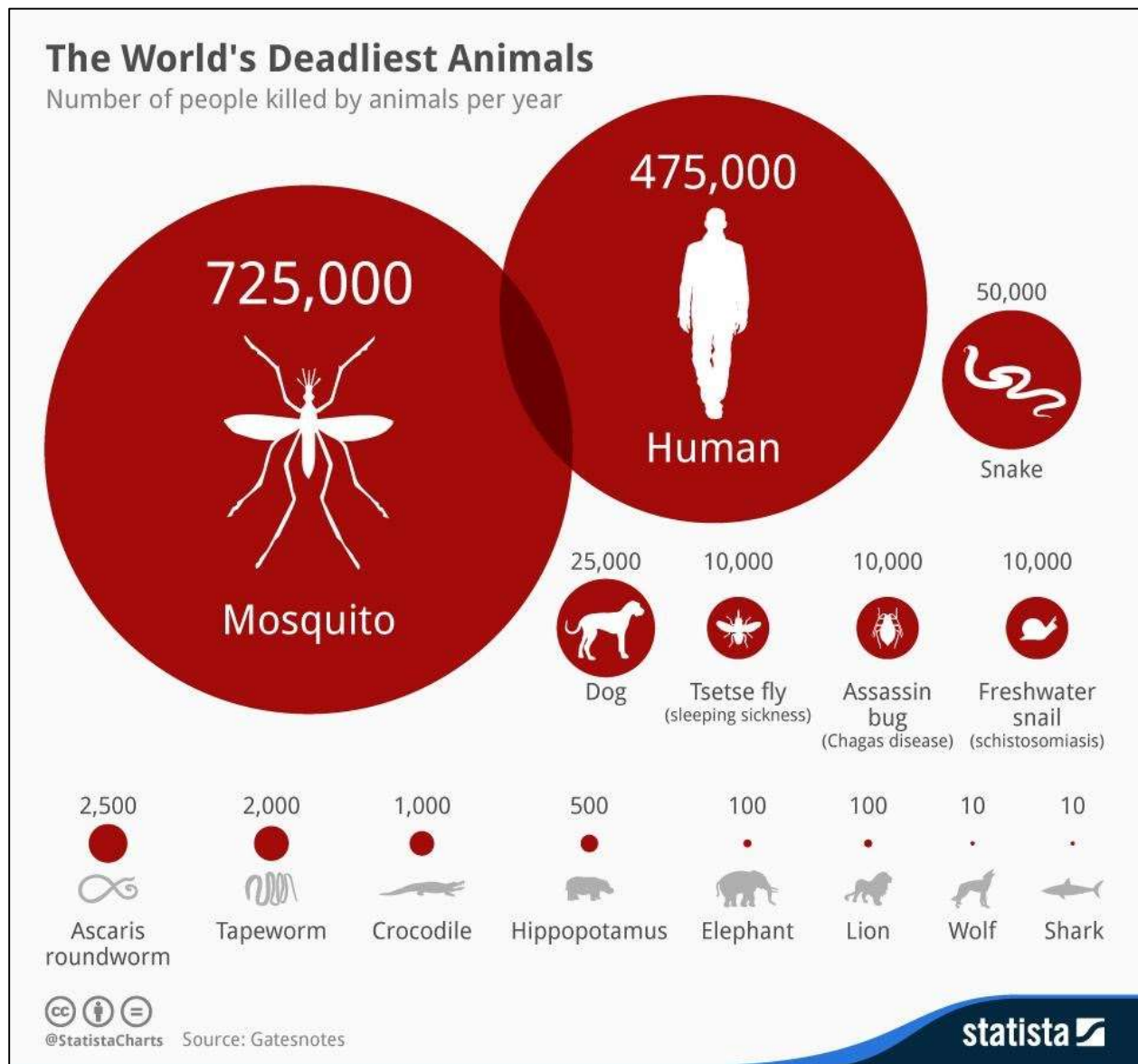
10. Find the difference between the estimated price and the selling price of the Durga Mahisasura Mardini'.Also, find the percentage of the profit.

Let us enjoy:

To get detailed information on Amrita Sher-Gil's life log on to

<https://youtu.be/XQsbbGlfu78>

Worksheet 3



The above chart shows the fatalities caused by different animals across the world. And the following is an excerpt from the survey done by an organization, Our World in Data to provide a fact-based overview of the world we live in — a perspective that includes the persistent and long-term changes that run as a backdrop to our daily lives. One study attempted to look at this from the perspective of what we die from: is what we actually die from known to common people? What they discovered about the world's deadliest animals came as a surprise!

Read the passage carefully and answer the questions that follow:

Films like Jaws gave sharks a man-eating reputation but when it comes to the animal responsible for the most human fatalities each year, nothing comes close to matching the mosquito. According to Gates notes, 725,000 people are killed by devastating diseases carried by mosquitos annually. Snakes inflict 50,000 fatalities every year while dogs kill a further 25,000 people, primarily through rabies. Mosquitoes are by far the world's deadliest animal

Around 1.5 million people are killed by animals every year. More than half a million are killed by other humans – in war, homicides, and terrorism. And close to a million people are killed by other animals in any given year.¹⁰

Mosquitoes are, by far, the world's deadliest animal for humans: at estimated 780,000 died from the transmission of disease from mosquitoes in 2016. Mosquito deaths are the sum of deaths (in order, highest to lowest) from: Malaria, Dengue fever, Japanese encephalitis, Yellow fever, Zika virus, Chikungunya, West Nile virus, and Lymphatic filariasis, for which it is the vector.

Answer the following questions:

1. Films wrongly label..... as highly dangerous predators.
2. is the disease caused by dog bite.
3. Name any two causes of human fatalities precipitated by man.
4. Find a word in the passage which is namely the longest river of the world.
5. Assassin bug causes Chagas disease. True or False.
6. The lowest number of fatalities is caused by
 - a. tape worms ,wolf, elephants
 - b. lion, shark ,crocodile
 - c. wolf, shark, lion
7. The word in the passage which means killing of one human being by another is
 - a. Terrorism
 - b. Fatalities
 - c. homicide
8. What is common between a fresh water snail, assassin bug and tsetse fly?
 - a. All are parasites
 - b. All are attracted to bright colors
 - c. All rank at the same index of fatalities
- 9.What is the ratio of men being killed by snakes Vis- a- vis dogs?

Let us explore:

Most dangerous animals in the world;

<https://youtu.be/X9i9lfuZrNM>

Worksheet 4

Read the passage carefully:

India is located latitudinally in the Northern Hemisphere and longitudinally in the Eastern Hemisphere.



India has a land frontier of 15,200 km. The total length of the coastline of the mainland, Lakshadweep Islands and Andaman and the Nicobar Islands is 7,516.6 km. India shares its border with seven countries- Afghanistan and Pakistan to the North-West, China, Bhutan and Nepal to the North, Myanmar to the far East and Bangladesh to the East. Sri Lanka (from the South-East) and Maldives (from the South-West) are two countries with water borders.

A total of 9 countries share borders with India. Out of these, 7 countries share land borders and 2 countries share sea borders with India.

Bhutan is the smallest neighbouring country of India in terms of land borders.

India has the third-largest international border in the world after China and Russia, and also the most sensitive border of the World that varies from extreme climatic conditions to infiltration. It is stretched from Jammu and Kashmir at the north to the Zero Point between Gujrat in India and Sindh province in Pakistan.

The total length of India-Pakistan border is 3,323 kilometres with 1170 km of Rajasthan, Gujarat 506 km and 425 Km Punjab. And not to miss the world's coldest border of Saichen glacier at the altitude range of more than 7000m.

Neighbouring Countries	Bordering States
Afghanistan	Jammu and Kashmir (Pakistan-Occupied Area).
China	Jammu and Kashmir, Himachal Pradesh, Uttarakhand, Sikkim and Arunachal Pradesh
Bangladesh	West Bengal, Mizoram, Meghalaya, Tripura and Assam
Bhutan	West Bengal, Sikkim, Arunachal Pradesh and Assam
Myanmar	Arunachal Pradesh, Nagaland, Manipur and Mizoram
Nepal	Bihar, Uttarakhand, Uttar Pradesh, Sikkim and West Bengal
Pakistan	Jammu and Kashmir, Punjab, Rajasthan and Gujarat

On the other hand there are the maritime borders recognized by the United Nations Convention on the Law of the sea entails boundaries of territorial waters, contiguous zones, and exclusive economic zones with seven countries. India has 14 functional Integrated Check Posts and Land Custom Stations that handle the custom and immigration.

Popular media, literature, books often chronicle the border centric themes and tales. India's border has often featured as the key element in one too many Hindi movies.

Answer the following questions:

1. Longitudinally India is in the
 - a. Northern Hemisphere
 - b. Southern Hemisphere
 - c. Western Hemisphere
 - d. Eastern Hemisphere
2. India shares land borders with..... countries
 - a. six
 - b. nine
 - c. seven
 - d. eight

3. The smallest border is shared with
 - a. Burma
 - b. Bhutan
 - c. Bangladesh
 - d. none of the above
4. The border length of india in the state of Punjab is.....
 - a. 425
 - b. 534
 - c. 345
 - d. 556
5. The country with the largest international border in the world is.....
 - a. India
 - b. China
 - c. Russia
 - d. Canada
6. The United Nations Convention on the Law of Sea is associated with the.....
 - a. international air space
 - b. land borders
 - c. maritime borders
 - d. all the above
7. Arunachal Pradesh shares borders with Sri Lanka. True or False.
8. Name the world's coldest border.
9. Find a word in the passage which means same as touching; sharing borders.
10. Mention any movie that is based on the theme of the passage given.

Let us explore-

Try exploring the lifestyles and habitat of neighbouring countries and watch People on Nat Geo.

Worksheet 5



The Unusual Pets

Read the following passage carefully:

The fascination for pets is impossible to understand fully. Humans are unique in the animal kingdom in wanting or needing to create close bonds with creatures of other species. American biologist Edward O. Wilson suggested that it might have been an evolutionary advantage to be close to other animals. Psychologists have pointed to how humans “infantilise” pets, giving them the role of children; fulfilling the human need to nurture and get unconditional love from creatures dependent on us.

St. Bernard – Rs 15,000-₹25,000
Husky – Rs 25,000-₹40,000
Cavapoo – Rs 45,000-₹90,000
Coton de Tulear – Rs 45,000 onwards
Cavachon – Rs 90,000-₹1,30,000
Green iguana – Rs 15,000 onwards
Tarantula – Rs 10,000
American bull frog – Rs 30,000
Shetland pony – Rs 4 lakh onwards
Ostrich – Rs 2 lakh

But how much love will you get from a lizard? Nevertheless, there you are ready to pet them. People are getting progressively more inventive about what pet company they choose. Iguana, for instance, are touted as the next best thing. S.A. Suhail, who owns Hyderabad's Fur N Feathers pet store, says people want off-beat pets. "A large number of people are opting for reptiles. They find it easier to care for an iguana than, say, a dog," he says. It could also be the desire for "new things," he adds, as an afterthought.

Praveen Chikoti owns, among more plebeian creatures such as swans and geese, iguana, frogs, and over 20 breeds of spiders, both venomous and non-venomous. He says he has had cats and dogs all his life and "wanted something unusual now. There are many pet-owners who do have the time and the money to go all out for their unusual animals. They not only install extra air-conditioners but also have large spaces and an army of helpers to exercise and groom their pets. But in many cases, so-called animal lovers have pets that are ill-treated, malnourished and unhealthy. Shelters across metropolitan cities are full of victims of irresponsible ownership. Suparna Ganguly, co-founder of Bengaluru-based CUPA (Compassion Unlimited Plus Action), says their shelter is packed to the rafters with pedigree dogs and pets of all kind which are abandoned. "Once a pet becomes an adult, reality/ boredom sets in. The pets are either kept in cruel confinement or abandoned," she says.

Answer the following questions:

1. According to the American biologist humans have to be close to animals.
 - a. natural ability
 - b. human need
 - c. evolutionary advantage
 - d. all the above
2. Among the unusual pets.....is touted as the next best thing.
 - a. saint bernard
 - b. husky
 - c. iguana
 - d. sloth bear

3. The fad for unusual pets is because of man's desire for.....
 - a. unconditional love
 - b. new things
 - c. sheltering animals
 - d. Both a and c
4. Some people who have the resources to keep unusual pets have/ keep
 - a. army of helpers
 - b. large spaces and ACs
 - c. gyms
 - d. Both a and b
5. Abandoned pets often end up in shelter home because they are.....
 - a. malnourished
 - b. unhealthy
 - c. ill treated
 - d. all the above
6. Choose the correct statement:
 - a. CUPA stands for Compassion Unlimited and Plus Action
 - b. CUPA stands for Care United Pet Animals
 - c. CUPA stands for Compassion Unlimited Plus Action
 - d. CUPA stands for Compassion Unlimited Plus Animals
7. Choose the correct statement:
 - a. The surge of pet shops is a common feature in small cities.
 - b. The surge of abandoned elderly is a common feature in big cities.
 - c. The surge of abandoned pets is a common feature in big cities.
 - d. The surge of abandoned pets is uncommon feature in big cities.
8. Choose the correct statement:
 - a. Both venomous and non venomous geese are kept as pets.
 - b. Both the owners and the pet shops are responsible.
 - c. Both cat and dogs are no longer the only preferred pets.
 - d. Both money and space is the only requirement for keeping pets.
9. Find a word in the passage which means same as relating to common people:
 - a. usual
 - b. off beat
 - c. plebeian
 - d. rafters
10. Which is the most expensive pet rated in the above given list? Would you care to keep it? Why / why not?

Let us enjoy:

1. True story of Dimdim the Penguin ;

<https://youtu.be/8lGfhrhaTVc>

2. Write the names of movies which depict a wonderful relationship between men and their pets

Worksheet 6



Read the passage carefully:

Bangalore: It's been almost eight years since Prasad migrated from Suganahalli, a small village in north Karnataka, to earn his livelihood in India's tech hub. After failing to land a job, he took to begging and is "happy" earning around 40 a day now. He was caught five years ago by officials entrusted with the task of rehabilitating beggars. But he was back on the street after a three-year hiatus during which he was in Beggars' Colony run by the state government to impart skills in various crafts.

Beggars' Colony at Summanahalli on Magadi Road, about 15 km from the city centre, was established in 1944 to serve as a rescue and rehabilitation centre for those arrested for begging.

The Karnataka Prohibition of Beggary Act 1975 bars people from begging and the authorities can take them into custody for trial and rehabilitation.



During his three years at the Colony, Prasad learned various crafts, including carpentry. However, when the authorities released him, he chose to go back to his old profession, begging.

"For begging you don't need any money to start up. One has to just stand at the corner of a road and ask people for money. Getting a job in Bangalore is hard; so people like us prefer to beg," said Prasad.

"Begging is a social problem. The entire society has to deal with it. Once we arrest them, we keep them at the Colony for a maximum period of three years. Along with counselling, we also train them in various vocational skills," Ramaya said.

Currently the Colony has 922 inmates. There is no official estimate of the number of beggars and homeless people in Bangalore. Social worker T Raja, the founder of Home of Hope, a place for the destitute in Bangalore says, "The state should ensure that after training the rescued beggars, they give them proper job opportunities, instead of releasing them to fend for themselves."

Although police deny the involvement of gangs in running a begging racket in Bangalore on the lines of Mumbai, a large number of children have over the years taken to begging.

Answer the following:

1. Choose the correct option:
 - a. At the age of 8, Prasad started learning carpentry.
 - b. At the age of 8, Prasad started begging
 - c. At the age of 8, Prasad started earning \$40
 - d. At the age of 8, Prasad won tech award.
2. Prasad prefers begging despite the rehabilitation because it needs no.....
 - a. degree
 - b. premises
 - c. investment
 - d. All of the Above
3. According to the law children can be picked off the city streets and sent to the.....
 - a. prisons
 - b. villages
 - c. home of hope
 - d. schools
4. Children in shelter homes are retained no more than.....years.
 - a. two
 - b. three
 - c. four
 - d. five
5. The Union Ministry has initiated For a Better Living Campaign in
 - a. Chandigarh, Delhi, Mumbai
 - b. Kolkata, Pune, Delhi
 - c. New Delhi, Mumbai, Bangalore
 - d. Bangalore, Kolkata, Chennai
6. Social workers want the government to
 - a. give permanent homes
 - b. relocate beggars out of cities
 - c. generate employment
 - d. make more schools/ colleges
7. Bangalore is fast becoming another Mumbai in the sphere of
 - a. modernization
 - b. pollution
 - c. population
 - d. begging rackets

8. The estimated 10 crore is allocated to maintain.....
- a. infrastructure
 - b. better living
 - c. Hospitals
 - d. Both a and b
9. Find a word in the passage which means same as lacking the means to provide for oneself.
10. Based on your reading of the chapter The Beggar (Moments) and the given passage, bring out one similarity and one difference between the story of Chekhov and Prasad.

Let us see and ponder on:

Beggary in India, a documentary ;

<https://youtu.be/HewTwDbvd-E>

Worksheet 7

Read the passage carefully:

In June 2019, the Queensland Fire and Emergency Service acting director warned of the potential for an early start to the bushfire season, colloquially called Black Summer which normally starts in August. The warning was based on the Northern Australia bushfire seasonal outlook noting exceptional dry conditions and a lack of soil moisture, combined with early fires in central Queensland. Throughout the summer, hundreds of fires burnt, mainly in the southeast of the country. The major fires peaked during December–January.



As of 9 March 2020, the fires burnt an estimated 18.6 million hectares (46 million acres; 186,000 square kilometers; 72,000 square miles), destroyed over 5,900 buildings (including 2,779 homes) and killed at least 34 people. At its peak, air quality dropped to hazardous levels in all southern and eastern states. The cost of dealing with the bushfires is expected to exceed the A\$4.4 billion , and tourism sector revenues fell by more than A\$1 billion However, economists estimated that the Australian bushfires may cost over A\$103 billion in property damage and economic losses, making the bushfires Australia's costliest natural disaster to date. Nearly 80 percent of Australians were affected either directly or indirectly by the bushfires. By 7 January 2020, the smoke had moved approximately 11,000 kilometers (6,800 mi) across the South Pacific Ocean to Chile and Argentina. As of 2 January 2020, NASA estimated that 306 million tones (337 million short tons) of CO₂ had been emitted.

Reinforcements not only from all over Australia were called in to assist but firefighters, supplies and equipment from Canada, New Zealand, Singapore and the United States, among others, helped fight the fires, especially in New South Wales.

State/ territory	Fatalities	Homes lost	Area (estimated)		Notes
			ha	acres	
Northern Territory	0	5	6,800,000	16,800,000	Area, includes mainly scrub fires, which are within the normal range of area burnt by bushfires each year; homes
New South Wales	26	2,448	5,500,000	13,600,000	Area; fatalities; homes
Queensland	0	48	2,500,000	6,180,000	Area, includes, scrub fires; homes
Western Australia	0	1	2,200,000	5,440,000	Area, includes scrub fires; homes
Victoria	5	396	1,500,000	3,710,000	Area; fatalities; homes
South Australia	3	151	490,000	1,210,000	Area; fatalities; homes (KI:65) (AH:86)
Australian Capital Territory	0	0	86,464	213,660	Area
Tasmania	0	2	36,000	89,000	Area home
Total	34	3,500+	18,736,070	46,300,000	Total area estimate as of 13 February 2020; current figure may be more

Answer the following questions:

1. The bushfire season is referred as
 - a. Summer sizzle
 - b. Australian fire season
 - c. black summer
 - d. none of the above

2. The reason for an early fire was
 - a. Dry season
 - b. Lack of firefighter
 - c. lack of moisture
 - d. Both a and c
3. The total estimated cost of dealing with the fire and the tourism revenue deficit amounted / exceeded
 - a. 4.4 billion
 - b. 5.4 billion
 - c. 1.4 billion
 - d. 103 billion
4. The smoke from Australia travelled to Latin America to countries like
 - a. Mexico
 - b. Argentina
 - c. China
 - d. Canada
5. The countries which sent reinforcements to combat the bush fire were
 - a. New Zealand
 - b. Canada
 - c. Singapore
 - d. all the above
6. There were a total of 64 fatalities in the bushfire. True or False.
7. Name the territory that reported the highest number of homes lost.
8. Find the difference between the largest and the lowest area in acres that was engulfed in the bushfire.
9. What was reported by NASA in January 2020?
10. Find the word which means same as ordinary or familiar language of conversation.

Let us explore:

Try watching a documentary 'Natural Disasters of the World'.

Worksheet 8

Racism is the belief that groups of humans possess different behavioural traits corresponding to physical appearance and can be divided based on the superiority of one race over another.

This image was on the front page of an American newspaper during a gathering against the violent act by a Police personnel on a BLACK MAN.



Study the picture carefully and answer the following questions:

1. What is the first thought which comes to your mind when you look at this image?
 2. What do you understand by 'Murdered for being Black?'
 - a. He was killed because he wore black coloured clothes
 - b. He was killed because his skin colour was black
 - c. He was killed because he was considered a terrorist
 - d. He was killed because he was a murderer
 3. How can we combat Racism?
 - a. By being united
 - b. Don't take the abuse
 - c. Report it immediately
 - d. All of the above
- Q4. Do you think that Racism exists in India as well?

Let us watch

Try watching movie 'Mandela: Long Walk to Freedom'.

Worksheet 9

Study the picture carefully and answer the following questions:



1. What does the picture depict?
 - a. Universal brotherhood
 - b. Peace
 - c. Happy People
 - d. Safe borders
2. Name a pair of homophones mentioned in the picture.
3. What do you understand by the term 'Bridging Humanity'?
 - a. Bringing people together
 - b. Unity
 - c. Connecting people of different communities
 - d. All of the above
4. Do you think there can be a 'World without Walls'?

Let us create:

Try making a poster on 'Universal Brotherhood'.

Worksheet 10

Recipe

Prep Time: 10 minutes

Cook time: 50 minutes

Serve: 4

Level of Cooking: Easy

Taste: Sweet

Ingredients for Vanilla Cake Recipe

Refined flour (maida) 2 cups + for dusting

Vanilla essence 3 teaspoons

Unsalted butter ½ cup + for greasing

Baking powder 2 teaspoons

Salt ¼ teaspoon

Castor sugar (caster sugar) 1½ cups

Eggs 4

Milk 1 cup

Method

Step 1

Preheat the oven to 180° C. Grease a five inch cake tin with some butter and dust with some flour.

Step 2

Sieve together the flour, baking powder and salt in a bowl and mix.

Step 3

Beat together the castor sugar and eggs in another bowl till it reach a ribbon consistency. Add the flour mixture and fold well.

Step 4

Heat the butter and milk in the microwave till the butter melts. Remove from heat and mix.

Step 5

Add the butter-milk mixture and vanilla essence to the flour-egg mixture and mix well to make a smooth batter.

Step 6

Pour the batter in the prepared tin, put the tin in the preheated oven and bake for forty to forty-five minutes. Remove from oven, cool and demould.

Step 7

Cut into wedges and serve.

Answer the following questions:

1. At what degree would you pre-heat the oven to bake a vanilla cake?
2. Total time required to prepare a cake for 4 persons is
 - a. 10 min.
 - b. 50 min.
 - c. 1 hour
 - d. 40 min.
3. Why do you think the cake tin needs to be greased with butter and dusted with flour?
4. Which word/ phrase used in the above recipe signifies that the batter is smooth and even.
5. Which ingredient would you change in this cake, to make it a chocolate cake?

Let us create:

Try baking a cake of your own!!

Worksheet 11

The kangaroo is a marsupial from the family Macropodidae. In common use the term is used to describe the largest species from this family, the red kangaroo, as well as the antilopine kangaroo, eastern grey kangaroo, and western grey kangaroo. Kangaroos are indigenous to Australia and New Guinea. The Australian government estimates that 34.3 million k.

Phylum: Chordate

Class: Mammal

Order: Diprotodontia

Speed: 20 km/h – 25 km/h (Hopping)

Lifespan: 6 years on average (In wild)

Gestation period: 31 days – 36 days

Did you know: Kangaroos have large, powerful hind legs, large feet adapted for leaping, a long muscular tail for balance, and a small head?

Read the information above and answer the questions which follow:

1. New Guinea is a part of
 - a. Asia
 - b. Australia
 - c. America
 - d. both a and b

2. Kangaroos fall under the category of
 - a. oviparous
 - b. viviparous
 - c. Carnivores
 - d. none of the above

3. Gestation means
 - a. time between birth and conception
 - b. time of conception
 - c. time between conception and birth
 - d. all of the above

4. Kangaroos can maintain their body balance because of their
- a. strong hind legs
 - b. tail
 - c. head
 - d. large feet
5. 34.3 million is written as
- a. 34,3000, 00
 - b. 34,003, 00
 - c. 34, 030, 000
 - d. 34, 300,000

Let us create:

Try making a scrap book on the state animals of various countries.

Worksheet 12



the Core
CLIMBING AND FITNESS



WHISTLER'S PREMIERE CLIMBING AND FITNESS FACILITY LOCATED IN THE HEART OF WHISTLER VILLAGE



WHISTLERCORE.COM
604 905 7625



INDOOR CLIMBING & ADVENTURES

INDOOR GUIDING

You climb while our friendly guides do all the safety work, belaying, coaching, motivating and just sharing the local Whistler vibe. All levels are welcome.

# PEOPLE	1	2	3	4	5
PRICE PER PERSON	\$60	\$33	\$30	\$27	\$24

CLIMBING LESSONS

From first timers to hardcore climbers learn from some of Whistler's best. Call for details.

DROP-IN CLIMBING

Climb on the auto belays, boulder, or belay if you have the experience!
Equipment rentals are available.

COST: Kids \$12, Youth \$15, Adult \$17.50
BOULDERING PASS: \$14

RETAIL

The Core pro shop sells a full selection of climbing and fitness equipment.



CLIMB & DINE

It's a Whistler favorite. Kids get supervised climbing and dinner with our friendly guides who do all the safety work. Parents get a chance to truly enjoy the fine dining Whistler has to offer.

Call for reservations.
Includes: Climbing gear, guide and dinner.
3 hours duration. Additional siblings receive 10% discount.

	AGES 6 TO 14
COST	\$70 per child
TIME	6pm to 9pm

ROCK MONKEYS DAY CAMP WINTER

This 4-hour adventure packed fun camp includes a mixture of Indoor Rock Climbing at the Core, Fun Games and Tubing at the Coca Cola Tube Park on Whistler Blackcomb*.

You ski while your kids enjoy Rock Climbing and Tubing!

	AGES 5 TO 12
COST	\$65 per child*
TIME	10am to 2pm

*includes tube park ticket
**Additional siblings receive 10% discount.

DAYS: Runs daily (3 children required)
DATES: December - Mid April

Other Information: Please bring your own packed lunch and clothes suitable for both Indoor Rock Climbing and Tubing in the snow!

PRIVATE BOOKINGS

Available for all ages, please call for details.

THE CORE THE CORE THE CORE THE CORE THE CORE THE CORE

Read the above pamphlet and answer the questions:

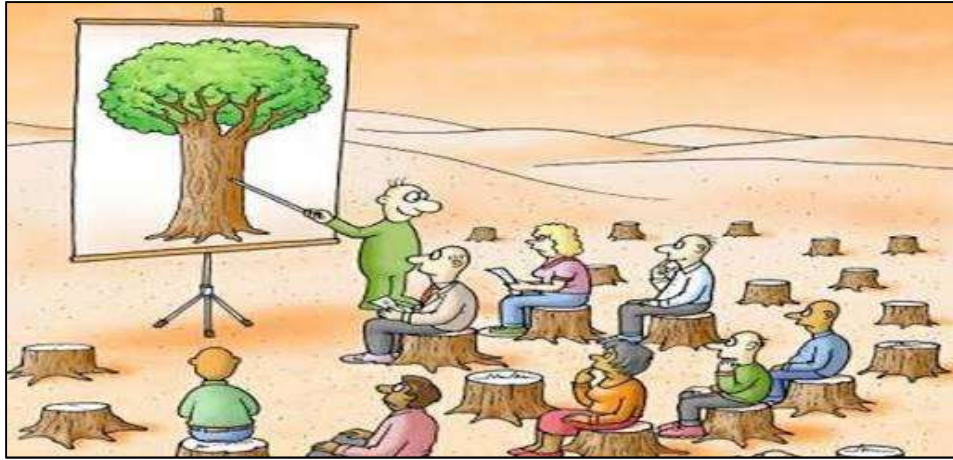
1. Where is the Climbing Club located?
2. Belay means the same as
 - a. bay leaf
 - b. fix (a running rope) round a rock, pin, or other object, to secure it.
 - c. hanging rope
 - d. belated
3. How can you gather more information about 'The Core Climbing and Fitness'?
4. Where do you think is this club located?
 - a. India
 - b. America
 - c. Britain
 - d. China
5. Why do you think the parents would like to take their children to 'The Core Club'?

Let us create:

Make a list of various adventure sports you have experienced or wish to explore in future.

Worksheet 13

Study the picture carefully and answer the following questions:



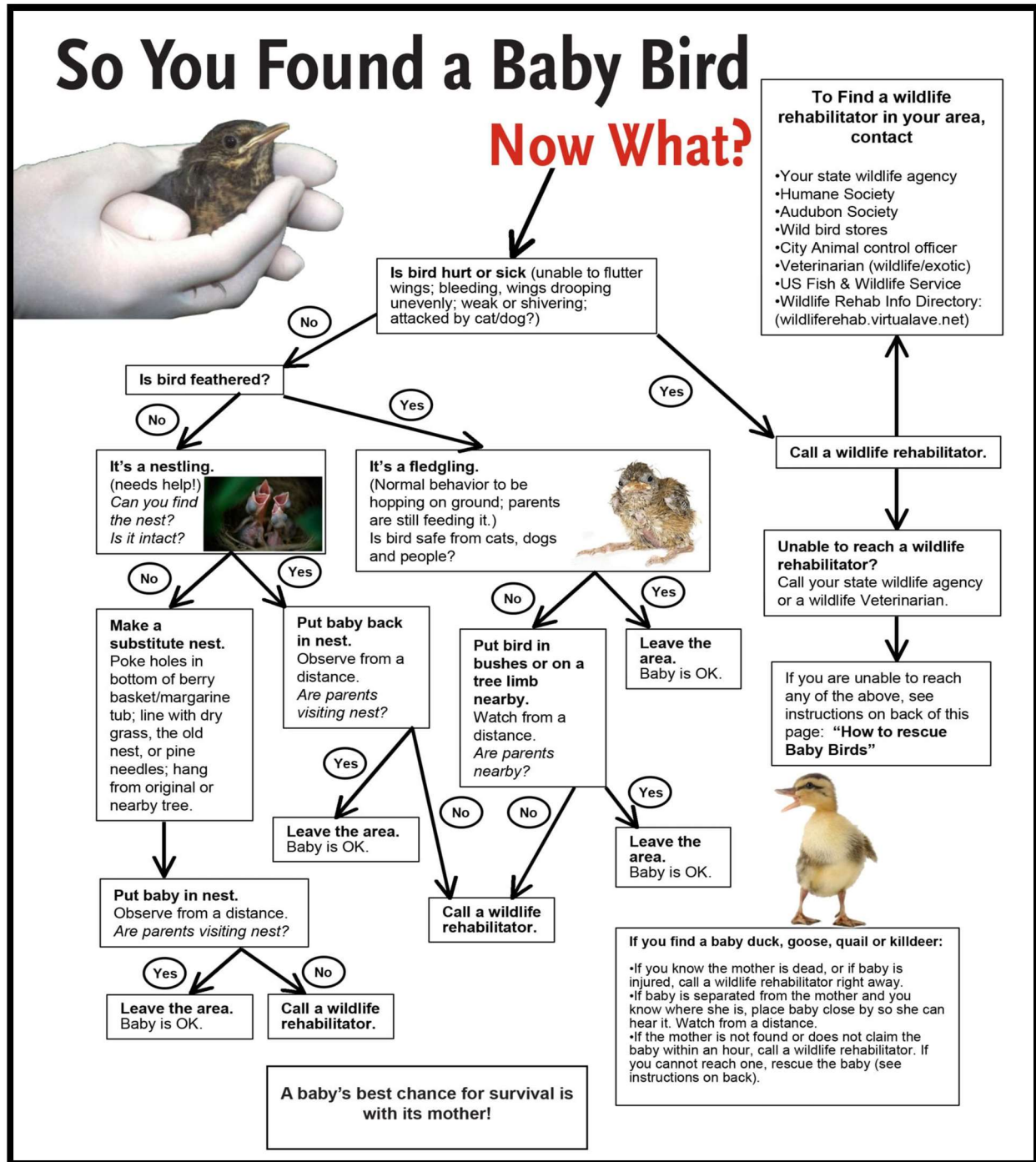
1. What does the picture represent?
 - a. Man is a fool
 - b. Nature at its best
 - c. Great teaching learning experience
 - d. Unaware of the consequences
2. Give a suitable title to the picture.
3. What are the effects of deforestation?
 - a. Climate change
 - b. Floods
 - c. Soil erosion
 - d. All of the above
4. How can humans control cutting down of trees?
 - a. Buy recycled products
 - b. Avoid visits to the forest
 - c. Agriculture expansion
 - d. Wood extraction

Let us create:

Try making a poster on 'Tree Plantation'.

Worksheet 14

Study the given chart and answer the questions that follow.



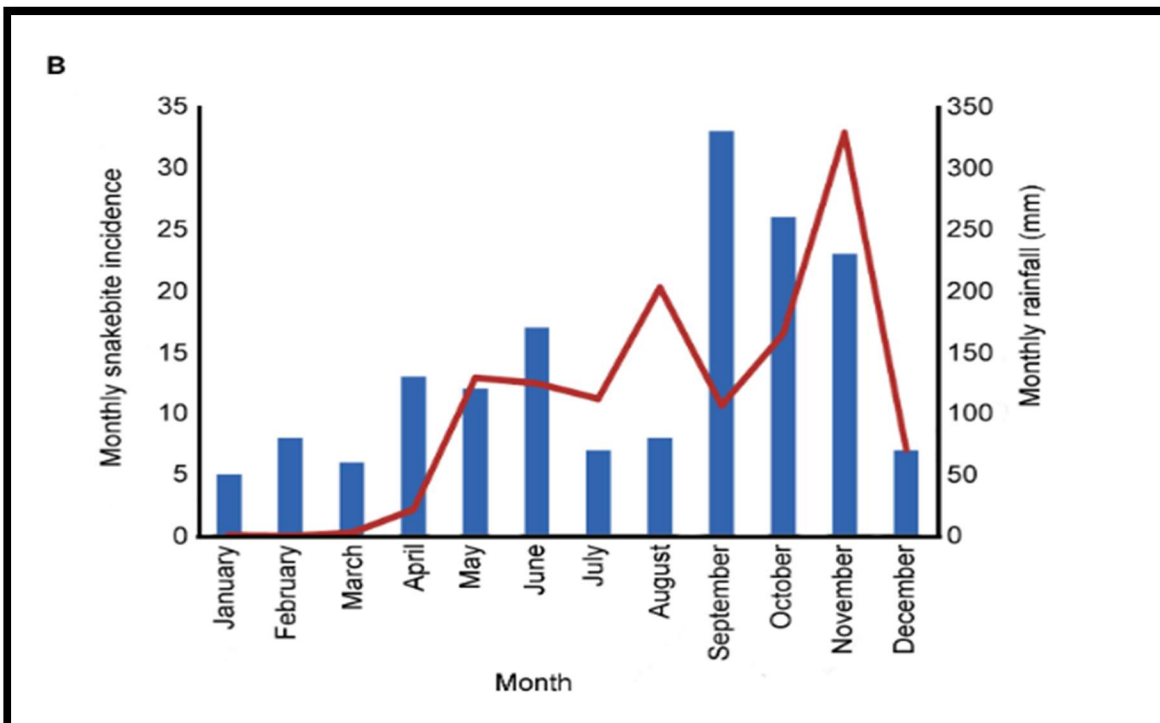
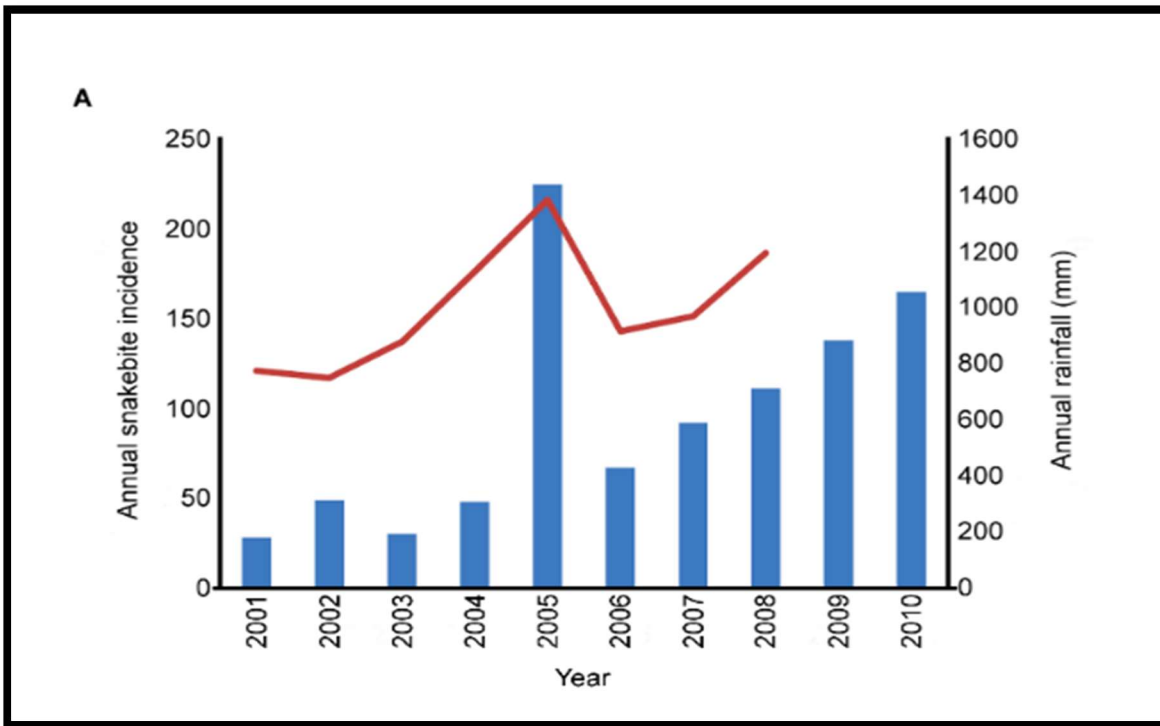
1. Suppose you have found a baby bird that needs help and you can't find its nest.
What should you do?
2. What should you do if the baby bird that you have found is bleeding?
3. Name any one agency that can help you to find a wildlife rehabilitator.
4. If the baby bird that you have found is a fledgling then you have to make sure
that it's.....
5. How can you make a substitute nest?

Let us create and observe:

Try making a bird house in your house and observe the behavior of birds.

Worksheet 15

Study the graphs given below



The blue bars represent annual snakebite incidents and red line shows rainfall statistics

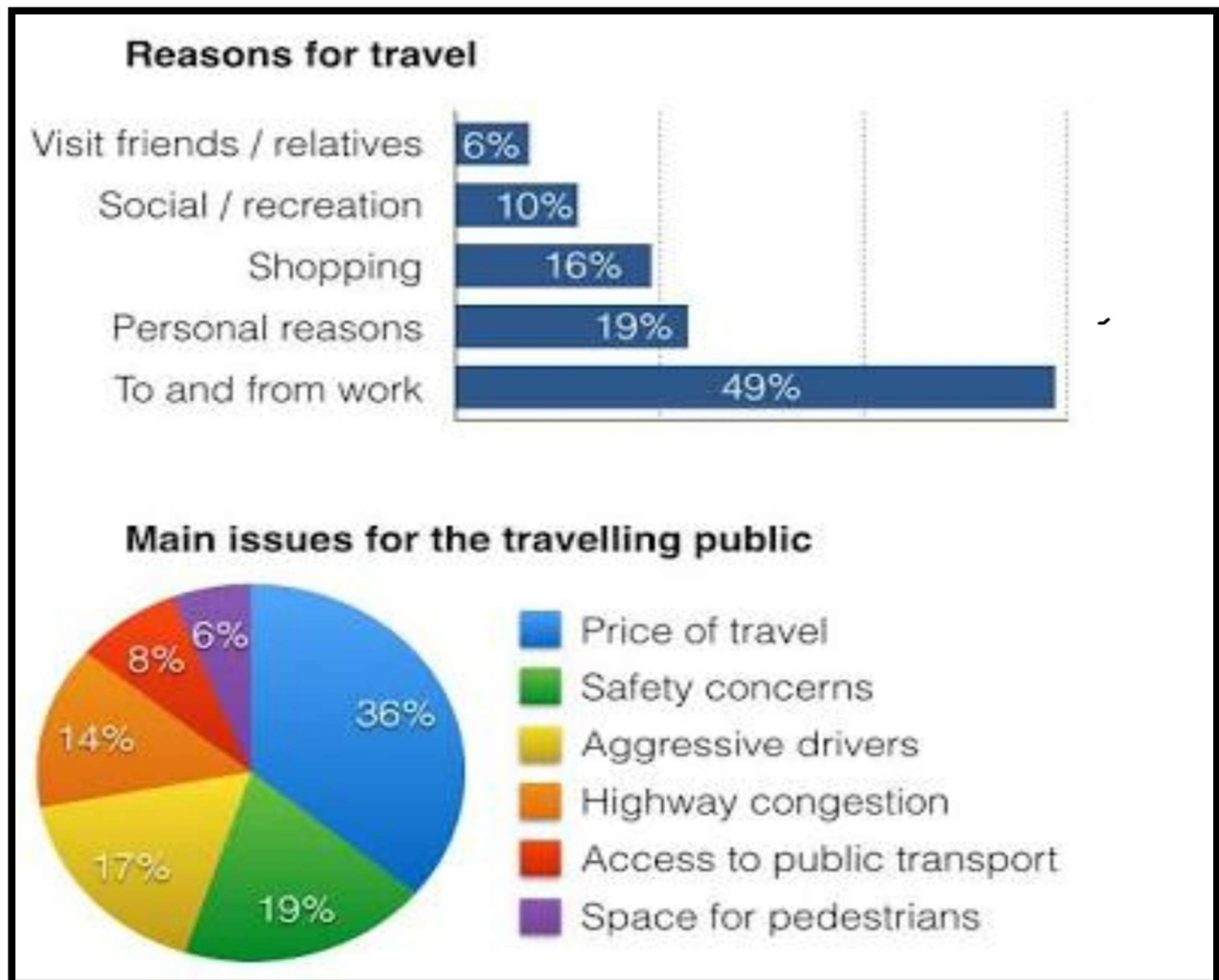
On the basis of the above graphs answer the following questions:

1. What do the above graphs depict?
2. Biennial means the same as:
 - a. occurring once in a year
 - b. occurring after two years
 - c. occurring twice in a year
3. In graph A, what relation can you see between the blue bars and the red lines?
4. Which of the following statement/s is/are true:
 - i. July and December witness the least number of snakebites.
 - ii. In 2005 there were around 230 cases of snakebites.
 - iii. No case of snakebite was reported in 2003.
 - iv. Maximum rainfall occurs in September
 - a. a, b, c
 - b. a, b, d
 - c. b, d
5. Who are more prone to snakebites-people living in rural areas or people living in urban areas? Give reasons for your answer.

Let us create:

*Try making a crossword on snakes. Visit
<https://images.app.goo.gl/c3wUwU83i4d3ERhaA>*

Worksheet 16



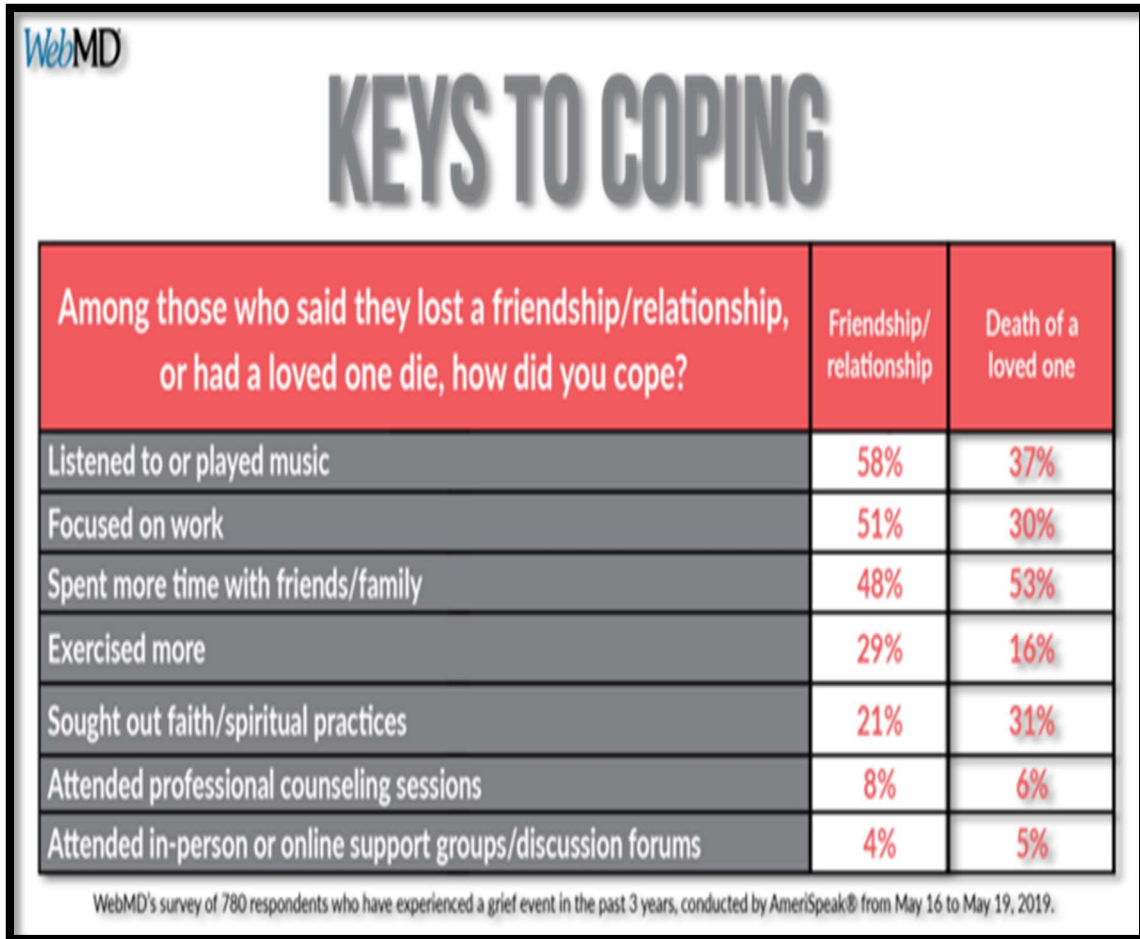
Study the graph and pie chart given above and answer the questions that follow.

1. What is the biggest concern of people while travelling?
2. Why do the people travel the most?
3. What is the total percentage of people travelling for shopping and other personal reasons?
4. What percentage of the travelling public has highway congestion as the main concern while travelling?
5. Write a few sentences elaborating the reasons why people travel.

Let us explore:

Try finding old vacation photographs and make a photo collage.

Worksheet 17



Read the above information carefully and answer the questions that follow:

1. What does the above table depict?
2. Which is the most common coping mechanism people adopt to deal with the grief of death of a loved one?
 - a. Exercise more
 - b. Spent more time with family and friends
 - c. Focus on work
 - d. Listen to or play music
3. Lost friendship is a grief not a lot of people understand, which is why people turn towards more self-soothing exercises like:
 - a. Exercise more
 - b. Listen to or play to music
 - c. Attended professional counselling sessions
 - d. Focus on work

4. John has lost his sibling in a car accident recently .What would you suggest him to give him comfort?

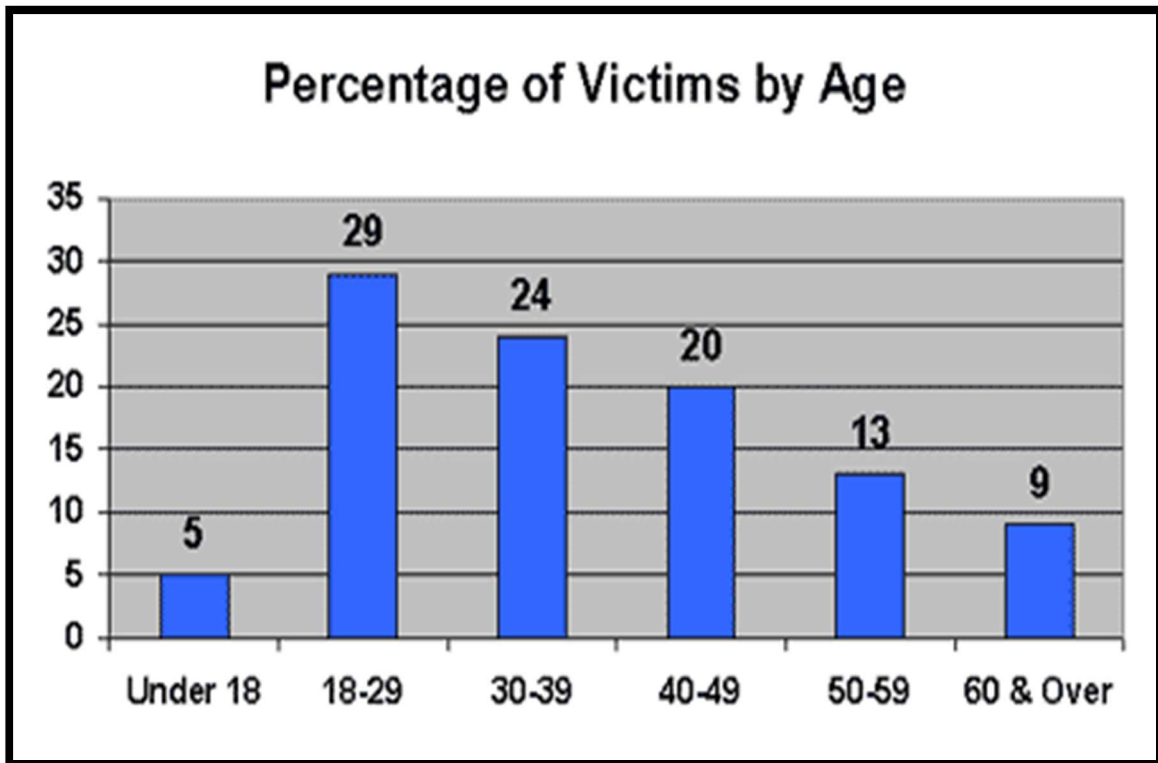
- a. Listen to him quietly
- b. Tell him to listen to music
- c. Give him unsolicited advice
- d. Tell him "It could be worse"

5. Among those grieving a friendship, self-medicating or over-indulging with food or alcohol are the most common activities. How can you help a person who indulged in these negative behaviour?

Let us create:

Try making a playlist of songs you'll love hearing to release your tension and relax.

Worksheet 18



Study the given bar graph showing percentage of identity fraud victims and answer the questions that follow.

1. Which age group of people have the least risk of Identity fraud?
2. Which age group of people mostly become the victims of identity fraud? Give reason to support your answer.
3. Identify the two age categories which comprise more than 50 per cent of the identity fraud victims?
4. What is the total percentage of identity fraud victims between 40 to 59 years?
5. Why do people commit identity fraud? Give any one reason.

Let us navigate:

Try watching a video on Identity Theft <https://youtu.be/ziHI8htZv5g> and list the possible things to avoid it.

Worksheet 19



Study the above image and answer the following questions-

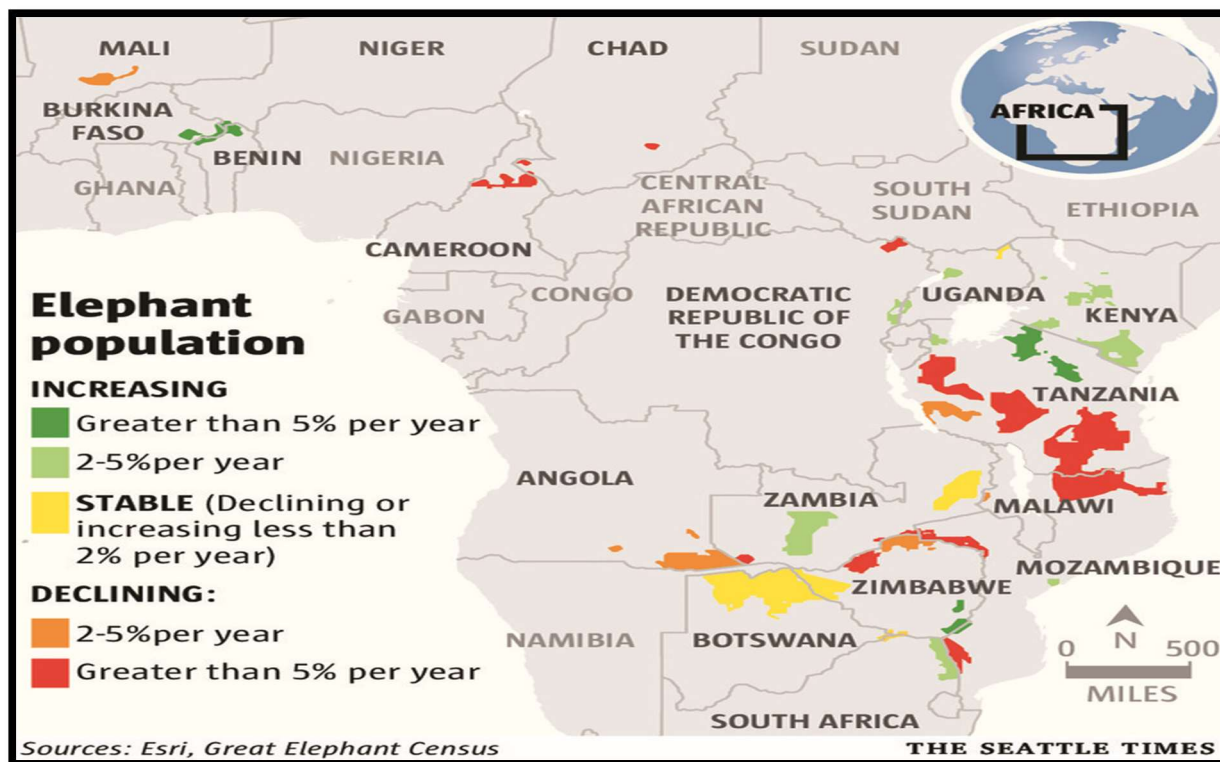
1. How do ants and fauna mutually benefit each other?
2. Which species of the ant is the most deadly species?
 - a. Maricopa Harvester
 - b. Bullet Ant
 - c. Both a and b
 - d. None of the above

3. Who is more ancient -Ants or humans?
4. What is used by the ants to prevent the enemy from entering their homes?
5. The nest of the ant is 400 feet below the ground of the house. Sugar cubes are placed on the shelf, 550 feet above the ground. If the ant reaches the shelf in 5 minutes, how long will it take to reach the ground from its nest?

Let us navigate:

*Try watching a video on 'Empire of the Ants- BBC Documentary'.
Visit <http://youtu.be/vt7jGGroFoQ>*

Worksheet 20



Study the above image carefully and answer the following questions: -

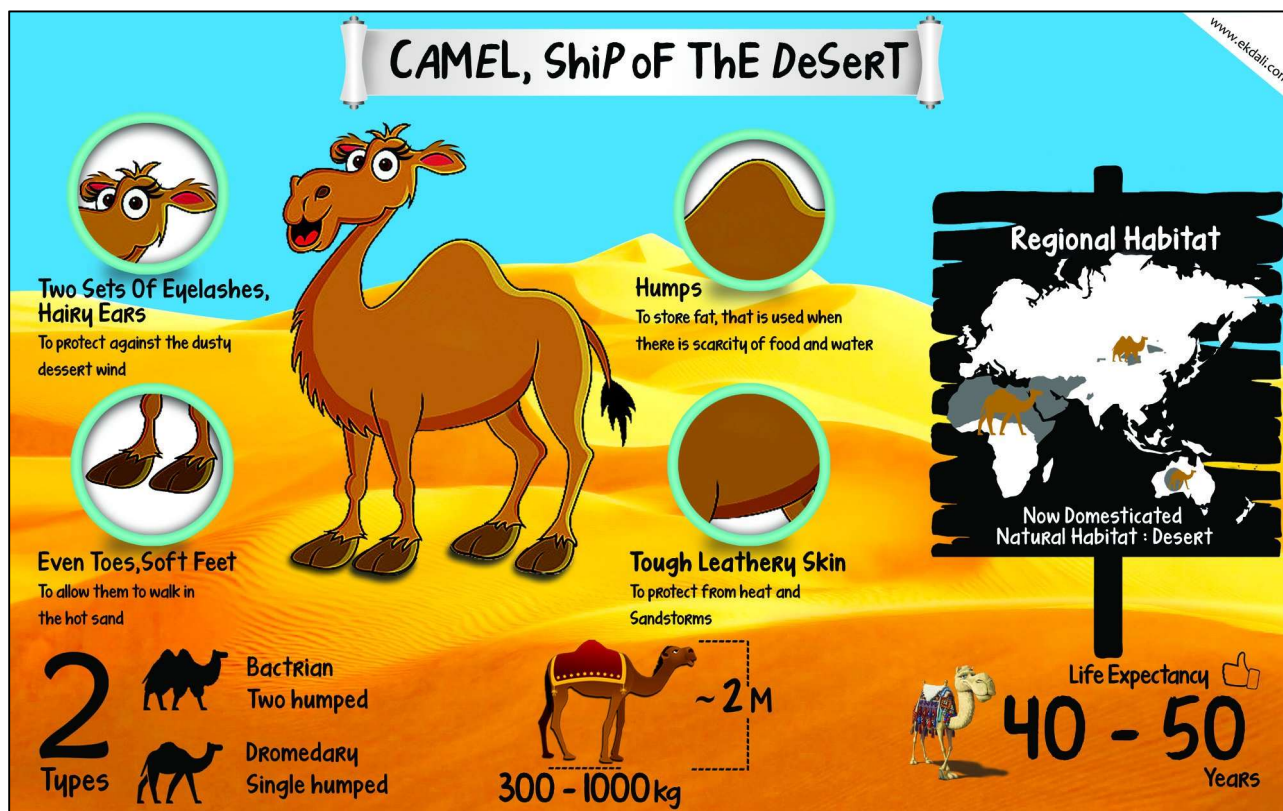
1. What does the above map intend to show?
2. Where has this data been published?
3. Name two places where the elephant population has not changed significantly.
4. In year 2019, the total population of elephants in Tanzania was 4240, the following year it is reduced by 5%. How many elephants were left?
5. Give any two reasons for the decline of elephant population.

Let us research:

Try making a comparative study on elephant population in India and Sri Lanka.

Read the book: 'The Elephant Whisperer' by Lawrence Anthony

Worksheet 21



Carefully study the above picture and look out for the given information:

Now answer the following questions.

1. Camel has two sets of Eyelashes and Hairy Ears. Why?
 - a. To look beautiful
 - b. It can dream
 - c. To use it as a brush
 - d. for protection against dusty wind
2. What is the difference between the Bactrian camel and Dromedary camel?
3. What is the average life of a camel?
 - a. 10 to 20 years
 - b. 30 to 40 years
 - c. 40 to 50 years
 - d. 80 to 90 years

4. Name any two continents which are a natural habitat of Dromedary camel?


- a. Europe and Africa
- b. Africa and Australia
- c. Africa and Asia
- d. South America and North America

5. At the time of birth, calf of camel is 30 kg and its height is 100cm. Weight of a camel increases 3 times every year and height increases by 0.3 metre every year, Height of the calf increases for 3 years and then stops increasing. What will be height in metres and weight in kilograms after 20 years?

Let us read:

Try reading 'Camel Crazy' by Christina Adams

Worksheet 22



World Migratory Bird Day

Select Language

WORLD MIGRATORY BIRD DAY 2020

9 May & 10 October



[ABOUT](#) [THEME 2020](#) [TAKE ACTION](#) [EVENTS](#) [PRESS](#) [RESOURCES](#)



World Migratory Bird Day
2020



**Birds Connect
Our World**

BASED ON ILLUSTRATION & DESIGN BY SHERRIE YORK // BIRDS: CALLOPE HUMMINGBIRD, CANADA WARBLER, BARN OWL, NORTHERN PINTAIL

Ecological Connectivity

Birds Connect
Our World!

WMBD 2020

Register your event today!

Join the worldwide celebrations by adding your
event to the WMBD event map.

Register now!

WMBD around the world

Have a look at the global map of events. Which
activities are taking place in your country?

See the map

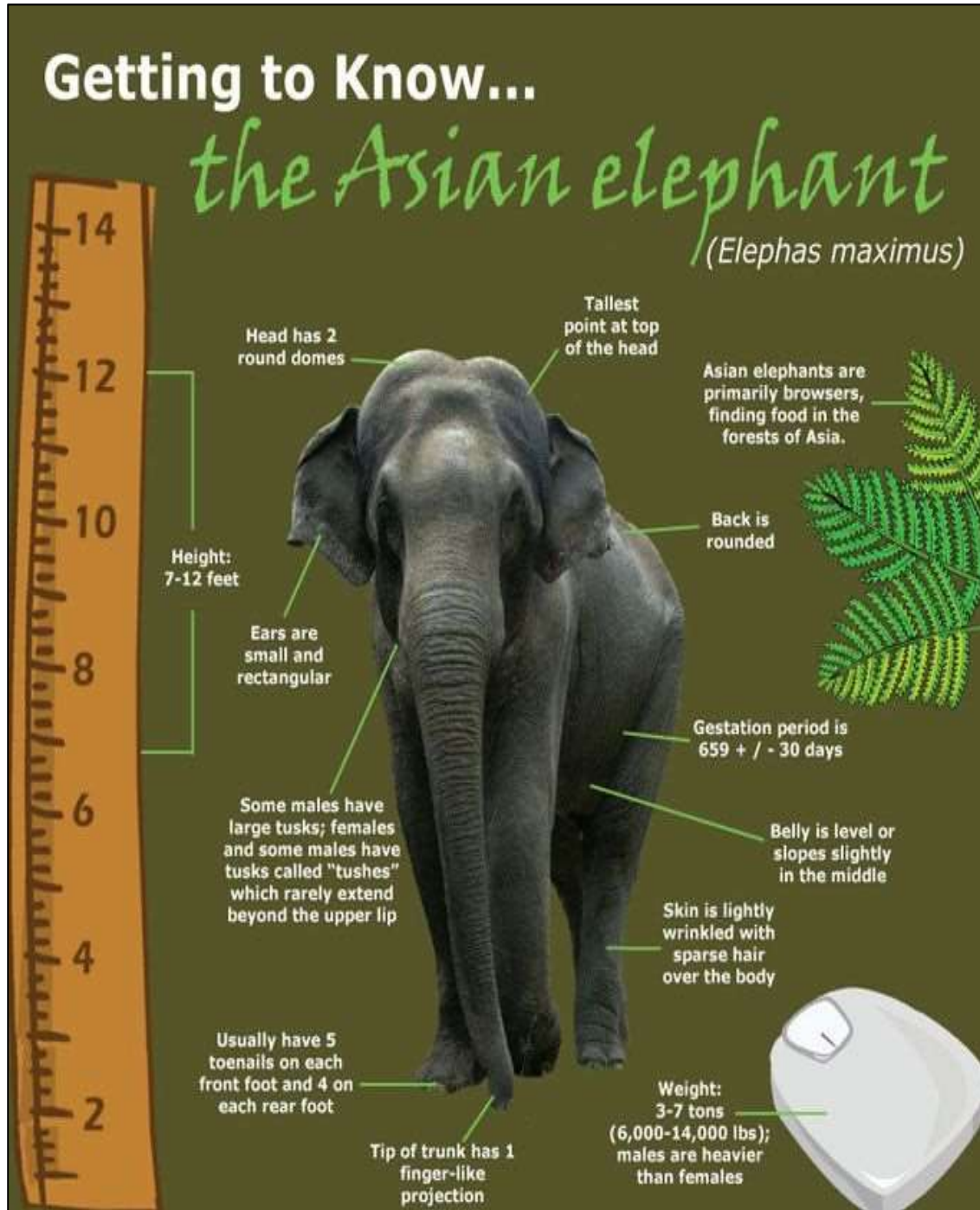
Observe the above image carefully and answer the following questions:

1. Is this event international?
2. What are the dates of celebrating bird migratory day in year 2020?
3. Give the full form of WMBD.
4. Find the word from the above which relates to or is concerned with the relation of living organisms to one another and to their physical surroundings.
5. Swedish scientists found that “great snipes” migrate Sweden to North Africa nonstop over a distance of around 4,200 miles (6,760 km) at a phenomenal 60 mph (97 kph). How many hours the bird takes to reach its destination?

Let us navigate:

*Try watching a video on ‘The Great Migration’. Visit
https://youtu.be/WhwBDjfWr_M*

Worksheet 23



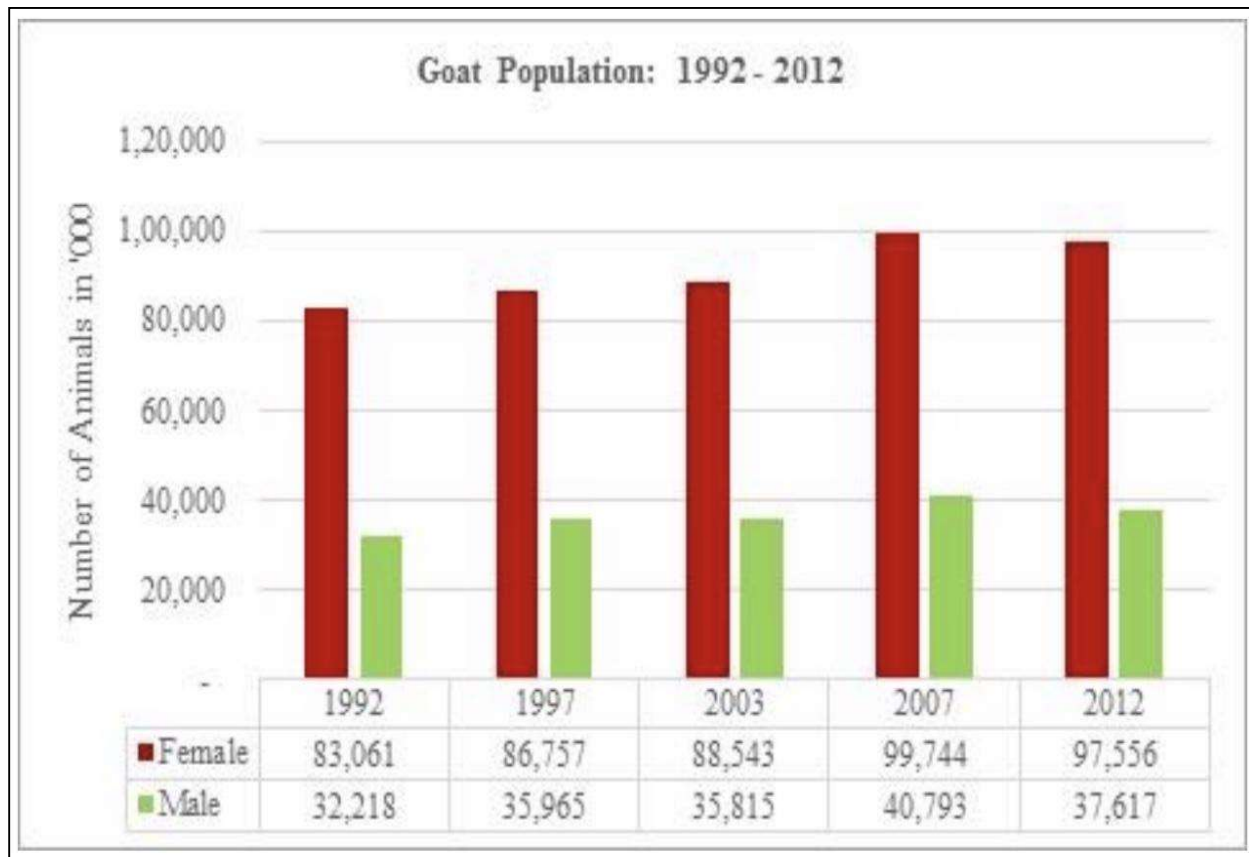
1. What is the maximum height an elephant can attain?
 - a. 14 feet
 - b. 7 feet
 - c. 8 feet
 - d. 12 feet

2. What is the scientific name for an Asian elephant?
 - a. Panthera Tigris
 - b. Vulpes vulpes
 - c. Loxodonta
 - d. Elephas Maximus
3. Where do elephants find their food?
4. What do we call a baby elephant?
 - a. Calf
 - b. Pub
 - c. Cub
 - d. Foal
 - i a
 - ii b and c
 - iii b and d
 - iv c

Let us navigate:

*Try watching a video on 'Life of Elephants' on Nat Geo. Visit
<http://youtu.be/Gy12fbz9404>*

Worksheet 24



Use the information given in the graph above to answer the questions that follow:

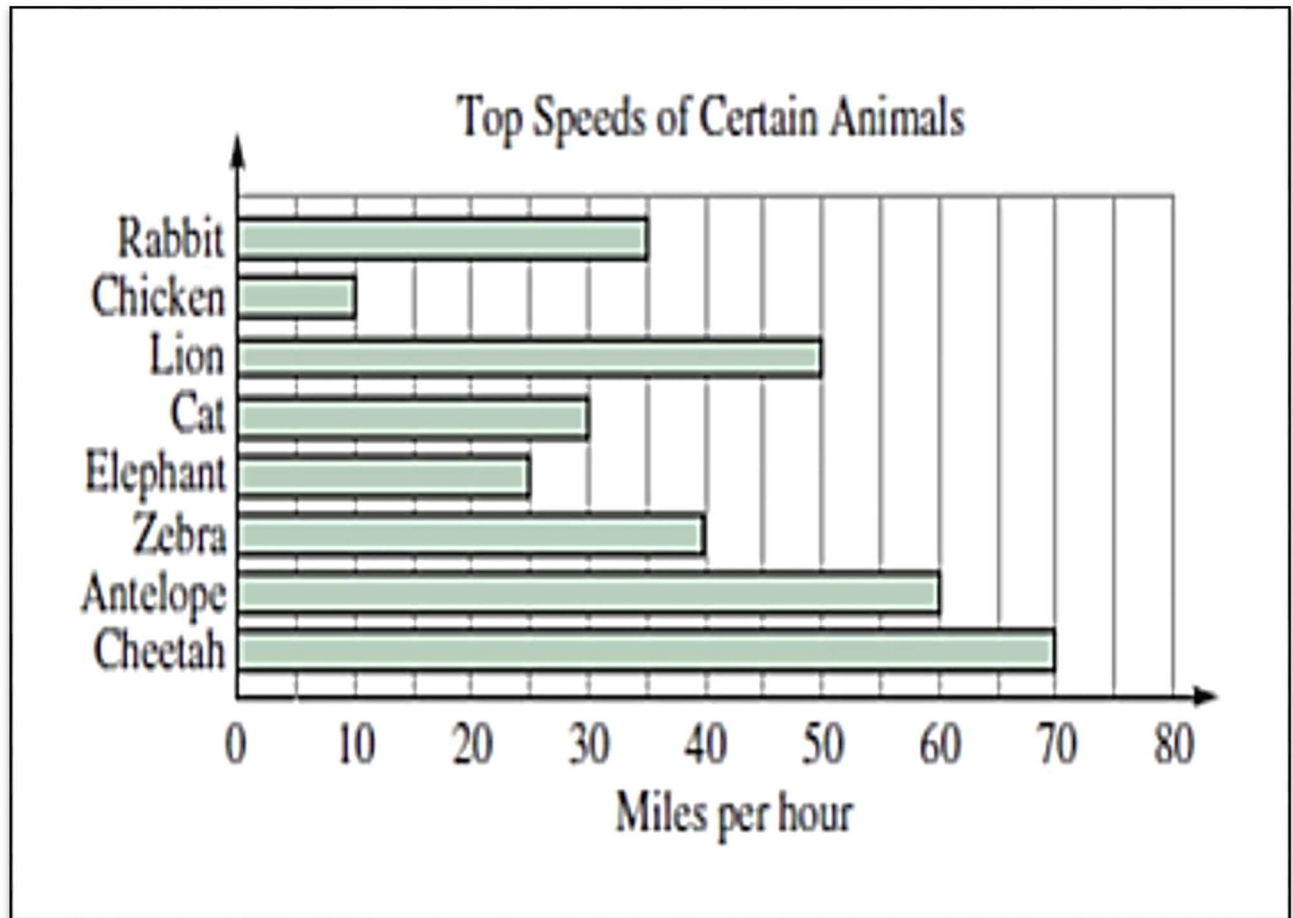
1. What does the above given graph indicate about the population of goats in the year 2012 as compared to 2007
 - a. comparative increase in population
 - b. comparative decline in population
 - c. there is no change in population
 - d. steep rise in population

2. I. What could be the reason for a decline in the goat population from 2007 to 2012?
II. Calculate the percentage of decrease.
3. Decline of goat population resulted in the shortage of goat meat which in turn impacted:
- a. nutritional requirements of the country's population
 - b. saving money of country's population
 - c. demand of fruits and vegetables
 - d. None of these
4. Why are goats named as 'Moving Refrigerators'?
- a. Their milk stays fresh for a long period
 - b. They live in hilly areas.
 - c. They can be milked anytime of the day
 - d. All if the above
5. Meat goat carcasses are generally:
- a. more muscular than milk goat carcasses
 - b. shorter than milk goat carcasses
 - c. slimmer than milk carcasses
 - d. undernourished and bony

Let us read:

Try reading the book 'The Backyard Goat' by Sue Weaver.

Worksheet 25



1. We are given a bar graph which shows the top speed of several animals.
Which is the slowest animal shown?
2. How fast can a chicken run?
 - a. 10 meters per hour
 - b. 10 miles per hour
 - c. 10metres per minute
 - d. 10 miles per minute

3. Which animal can run twice as fast as a rabbit?

- a. Cheetah
- b. Antelope
- c. Lion
- d. None of these

4. Can a lion outrun a Zebra?

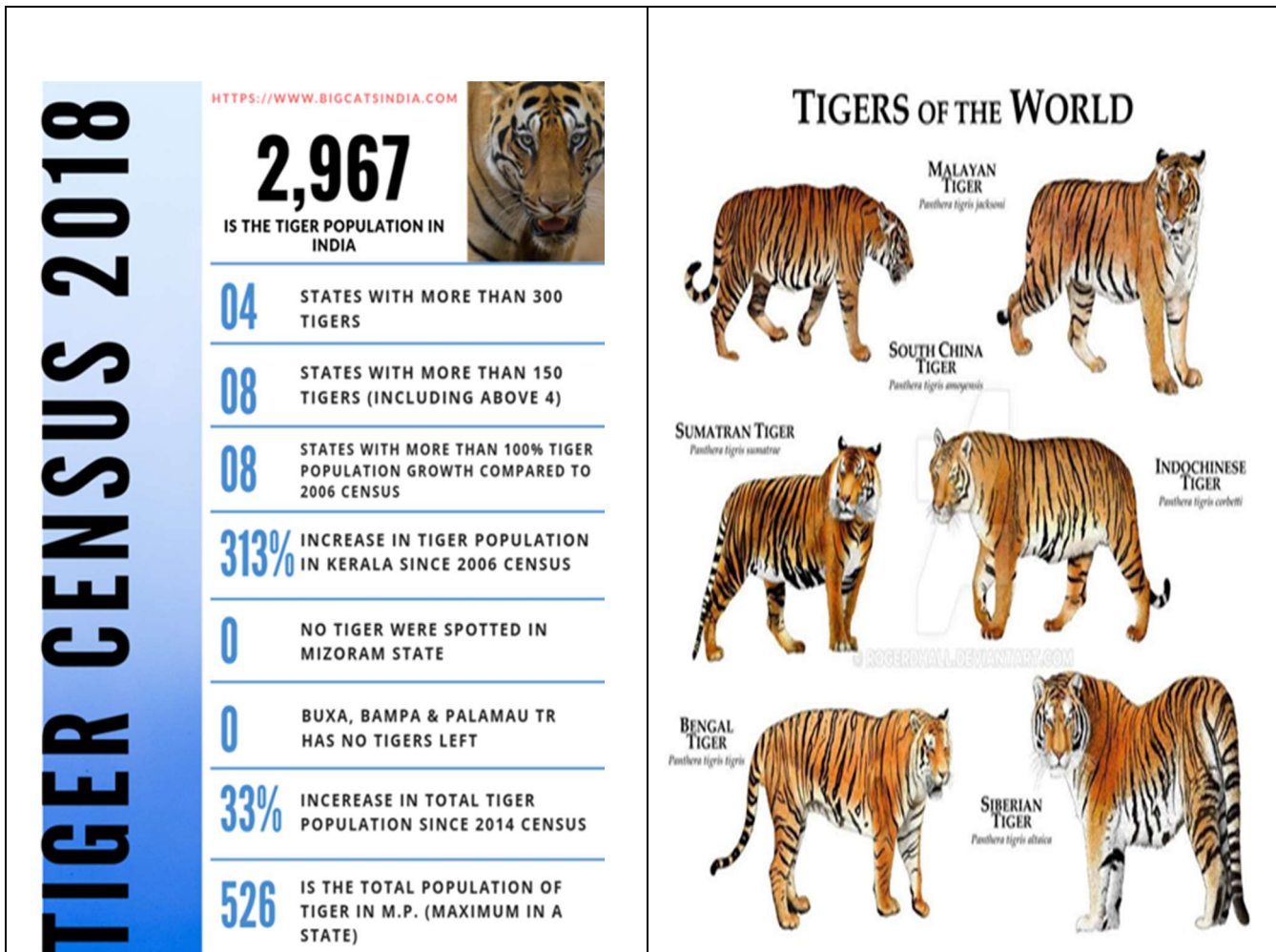
5. Bears are remarkably adaptable species; they are capable of living in
- a. mountains
 - b. forests
 - c. grasslands
 - d. all the above

Let us navigate:

Try watching a video on 10 Fastest Animals. Visit

https://youtu.be/Jy_gXQ6GQxo

Worksheet 26



1. Why there is a decline of the tiger species in India?
2. What will happen if poaching continues?
3. Which state in India has the highest number of tigers according to the latest survey?
4. How many tigers are there in India in 2018?

5. What is the reason behind choosing tiger as the national animal for our country India?
6. Which animals fall under the cat family?

Let us research:

Try collecting data about tigers in India and read 'Tales from the Indian Jungle'.

Worksheet 27

On the basis of the picture given below, answer the questions that follow:



1. What is the visible part of the sun called?
 - a. The Lithosphere
 - b. The stratosphere
 - c. The photosphere
 - d. The atmosphere

2. Two motions of the planets are_____.
 - a. Wiggle and wobble
 - b. Twist and shout
 - c. Rock and roll
 - d. Orbit and spin

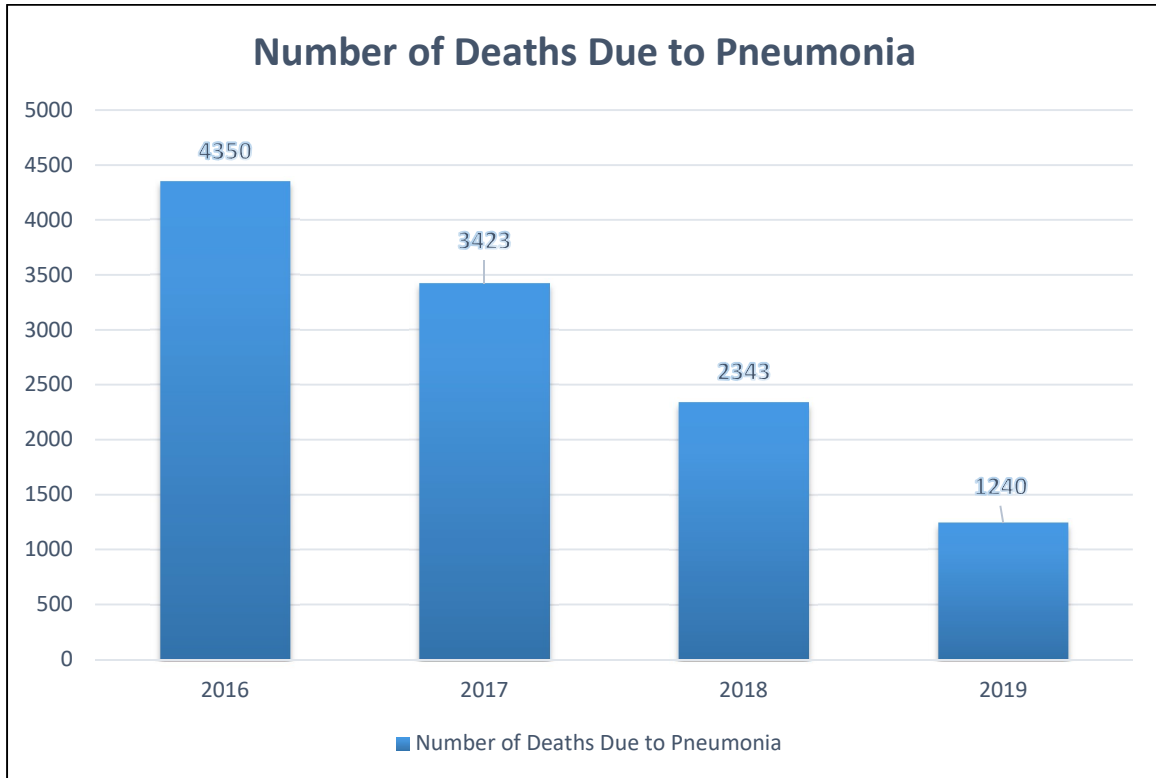
3. Approximately how many years are there in a light year
- a. 5.9 million (9.5 million km)
 - b. 5.9 billion (9.5 billion km)
 - c. 5.9 trillion (9.5 trillion km)
 - d. 590000 km (950000 km)
4. A terrestrial planet is a planet that is primarily composed of silicon rocks and metals.:
- (i) Choose the correct number of terrestrial planets in the solar system
 - a. 6
 - b. 4
 - c. 8
 - d. 6
 - (ii) Name the terrestrial planet having an active hydrosphere.
5. In 2006, IAU demoted Pluto demoted its position from nine planets to one of the five dwarf planets. What does IAU stand for? Choose the correct option -
- a. Indian Astronomical Union
 - b. Indian Aerospace Union
 - c. International Aerospace Union
 - d. International Astronomical Union

Let us navigate:

Try watching a video on 'Journey to the Edge of the Universe'. Visit <https://youtu.be/pj9cNnT7PJs>

Worksheet 28

The given bar graph shows the number of deaths due to Pneumonia in India from 2016 to 2019. Study the graph carefully and answer the questions that follow.



1. According to the graph, there has been a/an _____ trend in the number of fatalities due to pneumonia.
 - a. downward
 - b. leftward
 - c. upward
 - d. sideward

2. The number of deaths due to Pneumonia in the year 2017 exceeds the number of deaths in the year 2019 by _____.
a. 1031
b. 2343
c. 2183
d. 3423
3. The number of deaths due to Pneumonia in India was more than 2340 but less than 2500 in the year _____.
a. 2016
b. 2019
c. 2017
d. 2018
4. What is the difference between the number of deaths that occurred in the year 2017 and the number of deaths that occurred in the year 2018?
a. 1080
b. 3423
c. 1000
d. 1081
5. Study the given bar graph carefully. Summarise the information by selecting and reporting the main features. Make comparisons where relevant. Write the summary in at least 150 words.

Let us navigate

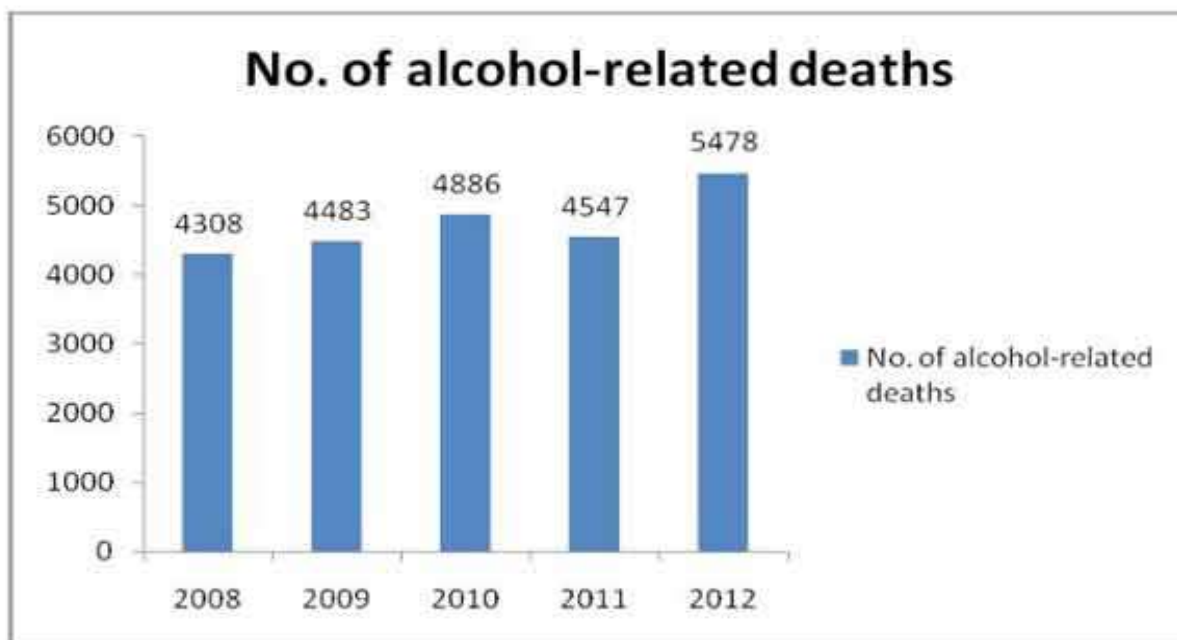
Try watching a movie 'Virus' (2020). Visit

<https://youtu.be/nYuwBdXZRac>

Worksheet 29

The chapter highlights the problem of drunkenness and its ruinous effects. Alcoholism is considered to be one of the major causes of unemployment. Moreover, the World Health Organisation gauges that alcohol kills three million people throughout the world every year. In other words, alcohol is the cause of 5.3% of all human deaths annually. The given bar graph shows the number of alcohol-related deaths in India from 2008 to 2012. Study the graph carefully and answer the questions that follow.

Exhibit 1: Total number of alcohol –related deaths in India



Source: NCRB

1. Which of the following years shows a downward trend in alcohol-related fatalities?
 - a. 2009
 - b. 2010
 - c. 2011
 - d. 2012

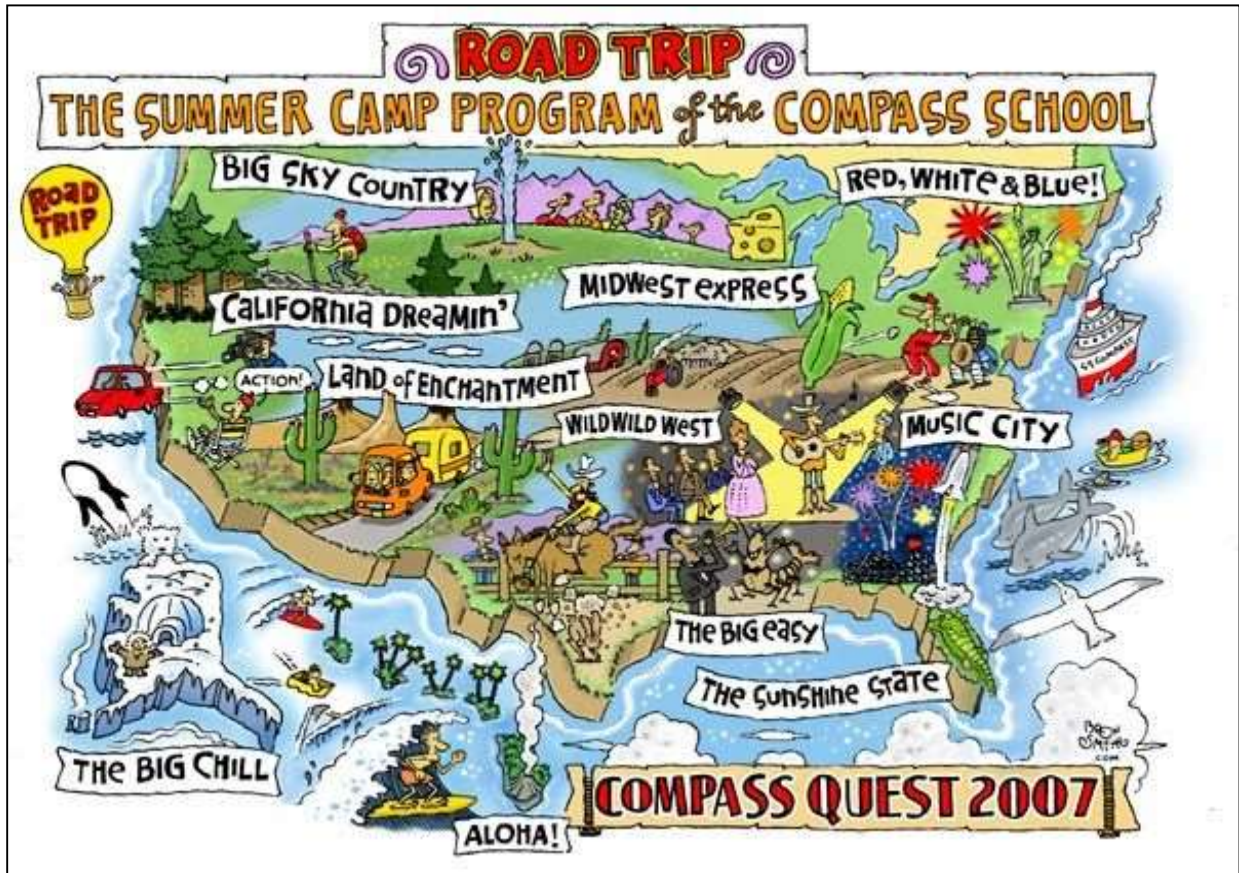
2. The number of alcohol-related deaths in the year 2012 exceeds the number of alcohol-related deaths in the year 2011 by _____.
- a. 1031
 - b. 931
 - c. 441
 - d. 831
3. The number of alcohol-related deaths in India was more than 4490 but less than 4600 in the year _____.
- a. 2009
 - b. 2008
 - c. 2012
 - d. 2011
4. How many alcohol-related deaths occurred in the two leap years that are included in the graph?
- a. 9786
 - b. 9194
 - c. 9567
 - d. 9976
5. The given bar graph is shown to the students by the teacher in the English lesson. The teacher asks the students to pen down the thoughts that arise in their mind after seeing the bar graph. As a student of the class, write a relevant article to complete the assigned task. Make sure that the article is titled appropriately.

Let us create:

Try making a poster on 'Menace of Alcohol'.

Worksheet 30

Study the following poster and answer the questions:



1. The above land mass is surrounded by water on three sides so it's called
 - a. a continent.
 - b. a peninsula.
 - c. an island.
 - d. an Isthmus.

2. What does the above poster inform about?
3. The information regarding the road trip is of
 - a. Africa
 - b. America
 - c. Indonesia
 - d. Siberia
4. If you want to enjoy the cooler climes which place will you go to?
5. Name the place where a ranch is located in the poster?

Let us navigate:

Try watching a video on 'Life in Beautiful Indian Countryside'. Visit <https://youtu.be/6mbpOPyhUs>

Worksheet 31

Read the given chart carefully and answer the questions that follow:



1. How do most of the Americans own a pet cat?
2. Why people give away their pets. Give two reasons.
3. The word 'offspring' here means:
 - a. partners
 - b. young ones
 - c. fellow dogs
 - d. None of the above.
4. The chart/message...
 - a. urges people not to keep pets.
 - b. tells that pets are a big problem.
 - c. provides detailed information related to pets.
 - d. urges people to keep pets.
5. What is the estimated number of pets that live in homes in US?

Let us navigate:

Try watching the movie 'The Secret Life of Pets'.

Worksheet 32

Study the following poster and answer the questions.

YOGA SONG & STORYTIME

Holistic, fun learning at its best!

DEVONPORT COMMUNITY HOUSE

Act out well-loved and original stories using creative yoga, sounds and song and sew the seeds of breath awareness and 'quiet time'!

FRIDAYS from
17th October
9.15 - 9.45 am
for **2.5 - 4 yrs**
Devonport Community House

w i t h
Michaela Sangl

Michaela is a yoga teacher, international children's illustrator & author and a former professional singer/songwriter and actress in Berlin. She is also the director of Yogi Kids!

We also have Kids Yoga 4-6yrs
& 7-10yrs and Family Yoga Workshops
See our website!

Prices:
4 classes: \$25
\$8 casual
Parents free!

021 229 0197

www.YOGIKIDS.co.nz

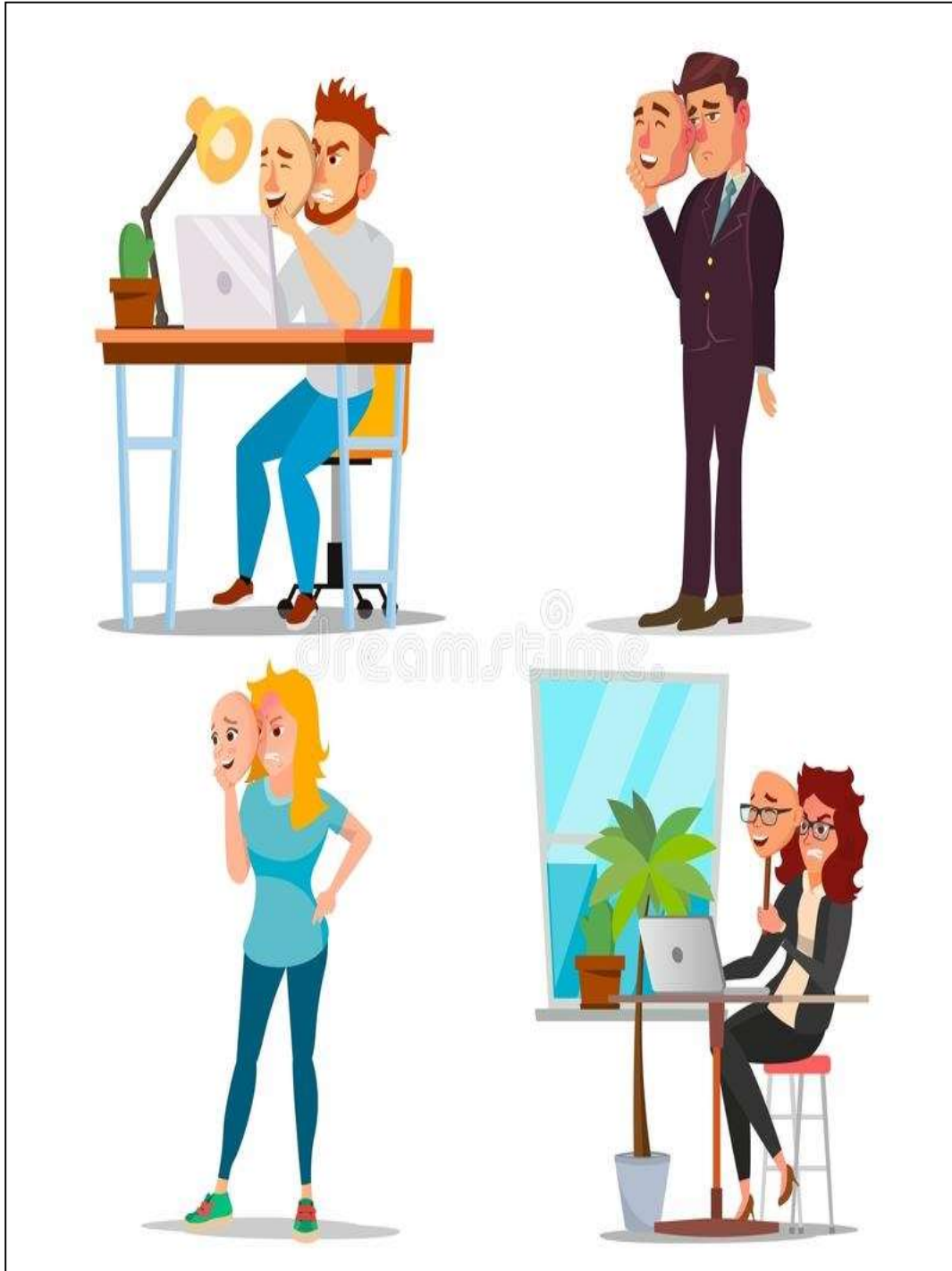
1. What does the poster depict?
2. Who will be holding the sessions?
- 3 How can you get more information about the programme?
- 4 Which statements stands true for Michaela
 - a. She is a song writer and yoga teacher
 - b. She is a singer and dancer
 - c. She is an author and director
 - d. both a and c
5. Which age group can enrol themselves for the above programme? Do you think it is beneficial for kids to join this programme why /why not give reasons for your answer.

Let us navigate:

*Try watching videos on Super Mind Yoga. Visit
<https://youtu.be/IH52yWC2WQI>*

Worksheet 33

Study the picture carefully and answer the following questions:



1. What does the above picture depict about people?
 - a. Busy people
 - b. Fake people
 - c. Happy people
 - d. Angry people
2. Do you think appearances matter?
3. The images of the people depicts:
 - a. Their honesty
 - b. Their inner happiness
 - c. Their false appearance in the public
 - d. None of the above
4. What is your take on the lives of people on social media?

Let us create:

Try drawing a cartoon strip using Emoji's.

Worksheet 34

Study the picture very carefully.



1. How can one provide help to someone?

- a. Supporting physically
- b. Assisting at work
- c. Providing Financial help
- d. All of the above

2. Have you ever helped someone? Share your experience.

3. Which age group needs help the most?

- a. Elderly people
- b. Children
- c. People who are unwell
- d. The youth

4. Give the synonym of 'HELP'

- a. Assist
- b. Abet
- c. Aid
- d. All of the above

Let us read:

Try reading 'You are Born To Blossom' by APJ Abdul Kalam

Worksheet 35

Study the picture carefully and answer the following questions:



1. Give a suitable title to the picture.

2. What do you understand by the word 'natural calamity'?

- a. A natural disaster which causes loss of lives and environment
- b. Something which happens naturally
- c. Uncontrollable disaster
- d. All of the above

3. What generally is the state of mind of people who face such disasters?

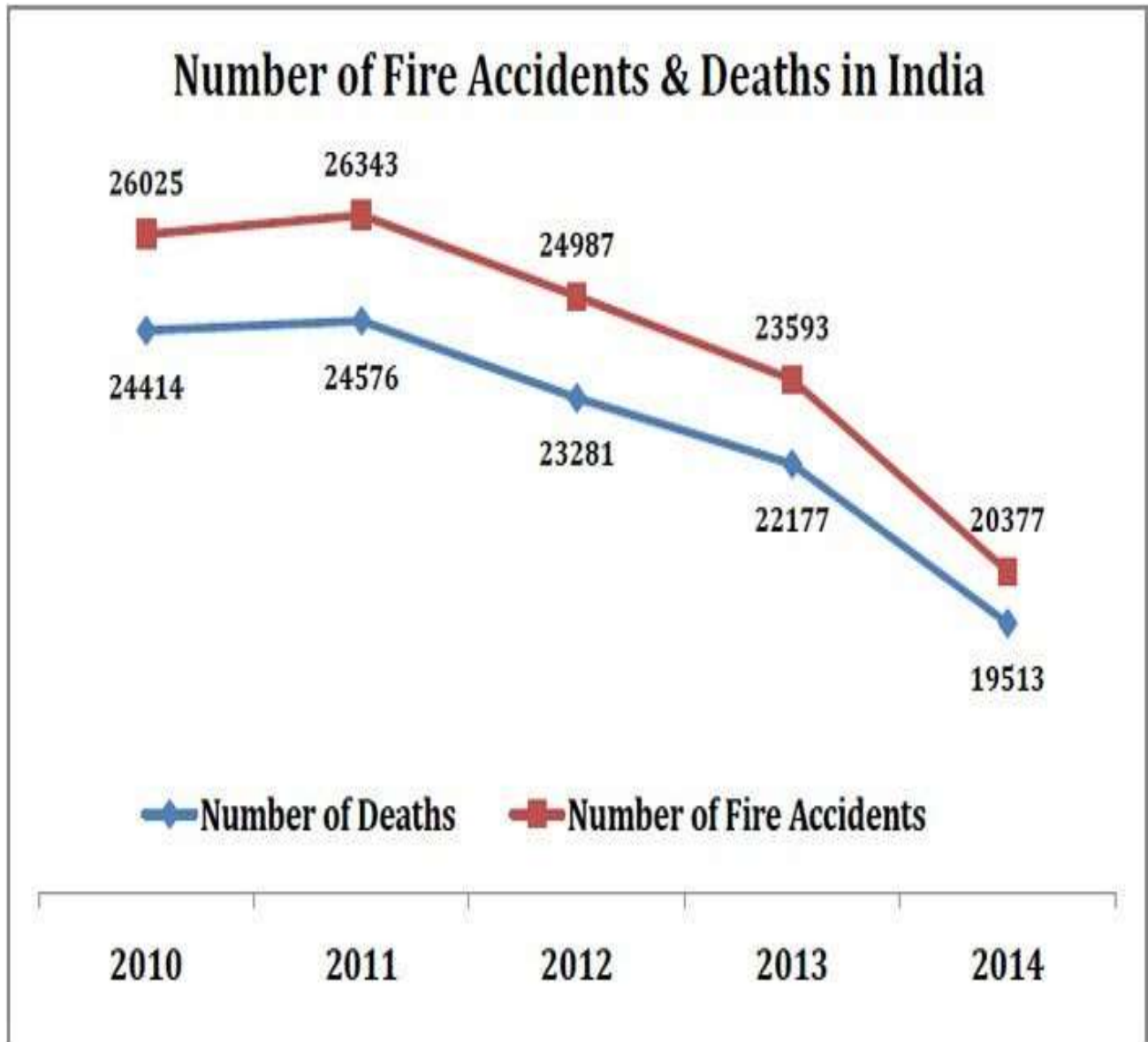
- a. Traumatized
- b. Glad
- c. Surprised
- d. Sad

4. Name a few 'natural calamities' you know.

Let us navigate:

Try watching the movie- 2012.

Worksheet 36



1. The difference between number of fire accidents in 2012 and 2014 is:

- a. 4617
- b. 3216
- c. 4610
- d. 3810

2. The graph represents:

- i. decline in number of deaths
 - ii. rise in number of deaths
 - iii. decline in number of fire accidents
 - iv. rise in number of fire accidents
- a. i and ii are correct
 - b. i and iii are correct
 - c. ii and iii are correct
 - d. iii and iv are correct

3. The number of deaths came down from 24414 in 2010 to 19513 2014. Calculate the percentage of drop in death rate.

4. What do you think can be the reasons of fire accidents?

Let us navigate:

Try watching a documentary on "Toughest Men in India". Visit <https://youtu.be/scvhxvjrw30>

Worksheet 37

Read the below given schedule and answer the questions that follow:

New routes and flights schedule:

Flt No	From	To	Dep	Arr	Frequency	Fares in Rs
184	Delhi	Chandigarh	9:50	11:10	Daily, ex Su	1707
164	Chandigarh	Delhi	22:50	0:20	Daily, ex Su	2121
160	Ahmedabad	Lucknow	14:30	16:30	Daily, ex Su	2746
161	Lucknow	Ahmedabad	17:15	19:20	Daily, ex Su	2487
250	Kolkata	Lucknow	16:30	18:10	Daily	2010
251	Lucknow	Kolkata	18:50	20:45	Daily	2209
248	Kolkata	Guwahati	4:55 (8:35 on W & Su)	6:00 (9:35 on W & Su)	Daily	2039
253	Guwahati	Kolkata	14:35	15:50	Daily	2143
249	Guwahati	Kolkata	10:35	11:50	Daily, ex W, Su	2143
252	Kolkata	Guwahati	12:25	13:40	Daily, ex W, Su	2039
184	Chandigarh	Ahmedabad	11:50	13:55	Daily, ex Su	3074
164	Ahmedabad	Chandigarh	20:10	22:10	Daily, ex Su	3874

(ex – excluding, Su-Sunday, W-Wednesday)

1. The city of Guwahti is located in Assam state, the state is well known for

.....

- a. bird life sanctuary and jute production
- b. bamboo production and Gir National Park
- c. tea plantation and Kaziranga National Park
- d. spices production and Nanda Devi Biosphere reserve

2. What would be the total amount of fare to be paid by two adult passengers travelling from Delhi to Chandigarh and then flying from Chandigarh to Ahmedabad?

3. Mention the flights flying from the eastern part of India.

4. Which of the flights given above have travel time of exact two hours?

5. What important documents are required by a passenger travelling abroad? (mention any two)

Let us explore:

Try reading 'The Discovery of India' and learn more about various states of India and how modes of transportation has changed over years.

Answer key

Worksheet 1

1. 90% of tropical cyclones occur within the 20 degree latitude north and south of equator.
2. Pacific Ocean is located close to equator; increase in solar radiations.
3. Two differences are: Northern hemisphere has the peak season in June while it's in December in Southern hemisphere. Secondly, the winds move clock wise in SH and anti clock wise in NH.
4. Amphan is the costliest cyclone. Originates in the Indian Ocean and moves up to Bay of Bengal.
5. False
6. May October
7. Amphan
8. Advisories
9. Spawn
10. Days b/w 9 to 31 = 23 days.... $23 \times 24 \text{ hrs} = 552 \text{ hours}$

Worksheet 2

1. b. Mumbai
2. c. Boundless India
3. d. Babit
4. a. Bronz sculpture
5. d. Both b and c
6. b. Tyeb Mehta
7. a. F.N Souza
8. d. 55.40 Crore
9. a. whopping
10. 4900000 profit

Worksheet 3

1. Jaws
2. Rabies
3. war, homicide, terrorism
4. Nile
5. True
6. iii) wolf, Shark, lion
7. iii) homicide
8. iii) All rank at the same index of fatalities
9. ii) tape worms, freshwater snails, and round worms
10. 1:2

Worksheet 4

1. d) Eastern hemisphere
2. c) seven
3. b) Bhutan
4. a)425
5. b) China
6. c) maritime borders
7. False
8. Saichen
9. Contiguous
10. Subjective answer

Worksheet 5

1. d) All the Above
2. c) Iguana
3. b) New Things
4. d) Both A and B
5. d) All of the above
6. c) CUPA Stands for Compassion Unlimited Plus Action.
7. c) The surge of abandoned pets is a common feature in big Cities.
8. c) Both cats and dogs are no longer the only preferred pets
9. c) Plebian
10. Subjective

Worksheet 6

1. b At the age of 8, Prasad started begging
2. d All of the above
3. c Home of Hope
4. b three
5. c New Delhi, Mumbai, Bangalore
6. c generate employment
7. d begging rackets
8. b better living
9. Destitute
10. Subjective answers

Worksheet 7

1. c) Black Summer
2. d) Both a and c
3. b) 5.4 billion
4. b) Argentina
5. d) All of the above
6. False
7. New South Wales
8. North Territory- Tasmania = 16711000
9. 306 million tones of CO₂ was emitted from the bushfire.
10. colloquially

Worksheet 8

1. Upto the discretion of the student
2. b
3. d
4. Upto the discretion of the student

Worksheet 9

1. a
2. piece peace
3. d
4. Upto the discretion of the student
6. cap, soap, comb and hair gel

Worksheet 10

1. 180degree
2. 1 hour
3. Avoid sticking of batter, easy to pull out
4. Ribbon consistency
5. Instead of Vanilla Essence, add Cocoa powder/ chocolate powder

Worksheet 11

1. Australia
2. Viviparous
3. Time between conception and birth.
4. Tail
5. 34,300,000

Worksheet 12

1. Its located in the heart / centre of Whistler Village.
2. Fix (a running rope) round a rock, pin, or other object, to secure it.
3. By visiting the site – Whistle Core. Com or by dialling 604 905 7625
4. America
5. Parents can enjoy dinner while the guides supervise the kids in climbing.

Worksheet 13

- 1 d
- 2 Upto the discretion of the student
- 3 d
- 4 a

Worksheet 14

1. Make a substitute nest.
2. Call a wildlife rehabilitator.
3. Your State Wildlife Agency/Humane Society/any other agency from those given in the top right box.
- 4...safe from cats, dogs and other people.
5. Poke holes in the bottom of a berry basket or margarine tub, line with dry grass, the old nest or pine needles. Hang from the original or nearby tree.

Worksheet 15

1. The above graphs show the correlation between rainfall and snakebite incidence
2. Occurring after two years
3. The number of snakebite incidents increase with increasing rainfall
4. a, b, d
5. People living in rural areas are more prone to snakebites because of the topography of those regions.

Worksheet 16

1. Price of travel
2. to and from work
3. 35 per cent
4. 14 per cent
5. People travel for various reasons. A large number of people travel to and from work. They also travel for outings, picnics and sightseeing trips. Shopping is also one reason for travelling. Many a times, people travel to see their relatives in the other cities. (Any suitable answer may be accepted)

Worksheet 17

1. Table depicts some strategy to deal with their grief that people adopt when they lose their friendship/relationship or loved ones.
2. Spent more time with family and friends.
3. Listened to or played music.
4. Listen to him quietly
5. I will counsel him first. If it doesn't work then will seek professional help for him.

Worksheet 18

1. People under 18
2. 18-29 years, because they are easily tempted/not mature enough. (Any other suitable answer)
3. 18-29 and 30-39 age categories
4. 33 per cent
5. Any suitable and logical answer.

Worksheet 19

1. Ants defend plant life in exchange of shelter.
2. a. Maricopa Harvester
3. Ants
4. Ants use their heads to stop intruders
5. 2.020 minutes.

Worksheet 20

1. Elephant census/Elephant Population /Decline of Elephant population in Africa
2. The Seattle Times
3. BOTSWANA & MALAWI
4. 4028
5. ENVIRONMENTAL CHANGE, DEFORESTATION, HUNTING POACHING or any other relevant answer

Worksheet 21

1. iv. for protection against dusty wind
2. Bactrian Camel has two humps, but Dromedary camel is single humped
3. iii 40 to 50 years
4. ii. Africa and Australia
5. Height=1.9 metre, weight=810 Kg

Worksheet 22

1. Yes
2. 9th may and 10th October
3. WORLD MIGRATORY BIRD DAY
4. ECOLOGICAL
5. 70 hours

Worksheet 23

1. D.12
2. d Elephas Maximus
3. They find their food in the forests of Asia
4. Option i –a

Worksheet 24

1. b. comparative decline in population
2. I. spread of some disease, unhygienic conditions, lack of medical help, no support by the govt., illiteracy etc. (answers may vary)
II. 3.18%
3. a. nutritional requirements of the country's population
4. c. They can be milked anytime of the day
5. a. more muscular than milk goat carcasses

Worksheet 25

1. Chicken
2. b. 10 miles per hour
3. a. Cheetah
4. Yes, it can
5. d. all the above

Worksheet 26

1. Human encroachment on the cat's habitat and poaching for the illegal wildlife trade are to be held responsible for the decline in the tiger species. The forested habitat, even within protected areas for tigers, has diminished over the last ten years.
2. Continued Poaching will result in the degradation of fragile eco-systems, rising of more illegal markets selling for bones, scales, antlers, skins and live tigers(caged) killing of animals most specifically those that are considered as being endangered species.
3. Madhya Pradesh has the highest number of tigers the number is 526.
4. India has fifty tiger reserves having 2,967 tigers according to the survey of 2020.
5. Tiger is an animal which is combination of grace, strength, agility, and enormous power that has earned the tiger it's pride of place as the national animal of India.
6. All those animals that are included into the cat family are cheetah, puma, jaguar, leopard, lion, lynx, tiger, and domestic cat.

Worksheet 27

1. c. The photosphere
2. d. Orbit and spin
3. c. 5.9 trillion (9.5 trillion km)
4. (i) b (ii) Earth
5. d. International Astronomical Union

Worksheet 28

1. Option a. downward
2. Option c. 2183
3. Option d. 2018
4. Option a. 1080
5. Answers may vary.

Worksheet 29

1. Option c. 2011
2. Option b. 931
3. Option d. 2011
4. Option a. 9786
5. Answers may vary.

Worksheet 30

1. Peninsula
2. Summer camp programme of the compass school
3. America
4. The Big Chill
5. Wild Wild West

Worksheet 31

1. From friends and family
2. Not enough time/divorce or death/behaviour issues
3. Young ones
4. Urges people to keep pets
5. 178.9 million

Worksheet 32

1. Programme for yoga time and storytime.
2. Michaela Sangl
3. By visiting the site [www. YOGIKIDS.co.nz](http://www.YOGIKIDS.co.nz)
4. both a and c
5. Children in the age group of 2.5 to 10 years can enrol themselves for this programme. Students will give their own inputs for the second half of the answer.

Worksheet 33

1. b
2. Upto the discretion of the student
3. c
4. Upto to the discretion of the student

Worksheet 34

1. d
2. Upto to the discretion of the student
3. a
4. d

Worksheet 35

1. Upto the discretion of the student
2. D
3. A
4. Upto the discretion of the student

Worksheet 36

1. c
2. b
3. 20%
4. Response depends upon the personal experiences of the learner of his day to day Life

Worksheet 37

1. tea palnation and Kaziranga National Park
2. fare for Delhi to Chandigarh = Rs.1707
+
fare for Chandigarh to Ahemdabad = Rs 3074
Total = 4781 *2 = Rs 9562/-
3. Flight nos: 250, 248,253,249,252
4. Flight no 160 Ahemdabad to Lucknow & flight no 164 Ahemdabad to Chandigarh.
5. Passport, visa, travel insurance, air ticket etc.

Credits:

Coordinators

- Ms. Reema Dewan, Principal, Delhi Public School, Chandigarh
- Ms. Vineeta Kashyap, Principal, GMSSS-46, Chandigarh

Resource Group

- Ms. Sangeeta Sood, Delhi Public School, Chandigarh
- Ms. Kamaljeet Kaur, Delhi Public School, Chandigarh
- Ms. Karamjit Kaur, Delhi Public School Chandigarh
- Ms. Yogeeta Khanna, GMHSSS 16, Chandigarh
- Ms. Jyotsna Shukla, GHS-53, Chandigarh
- Ms. Rakhi Banga, St. John's High School, Chandigarh
- Ms. Isha Anand, GMHS 41-D, Chandigarh
- Ms. Simerjeet Kaur, GMSSS 15C, Chandigarh
- Ms. Lalita Nandel, DAV 15, Chandigarh
- Ms. Poonam Sharma, GMHS 7, Chandigarh
- Ms. Prabhjot Kaur, Chitkara International School-25, Chandigarh
- Ms. Serbjeet Kaur, SCERT-32, Chandigarh
- Ms. Anita Kapoor, Bhawan Vidyalaya-27, Chandigarh
- Ms. Preeti Jolly, Carmel Convent- 9, Chandigarh
- Ms. Reema Dhawan, GMSSS-26, Chandigarh
- Ms. Indervanit Sondhi, Sacred Heart Schoool-26, Chandigarh
- Ms. Ramanjeet Kaur, GMSSS 32, Chandigarh
- Ms. Madhumita, GHS 52, Chandigarh
- Ms. Satinder Kaur, GMSSS 37B, Chandigarh
- Ms. Prachi Tomar, GMHS 40 A, Chandigarh
- Ms. Seema Dhillon, GMSS 44, Chandigarh
- Ms. Tarunpreet Kaur, GMSSS 35, Chandigarh
- Ms. Baljeet Kaur, GMSSS 47 D, Chandigarh
- Ms. Piyusha Sharma, Chitkara International School-25, Chandigarh

CRITICAL AND CREATIVE THINKING (CCT)

Resource Material Developed

Mathematical Literacy

- 4 modules (classes 7 to 10) in English and Hindi medium
- 'Step by Step' Mathematics Booklet Series
- 'Mathlete' fortnightly series
- CCT Booklets for classes 8th, 9th and 10th (100 pages)

Scientific Literacy

- 5 Modules (classes 6 to 10) in English and Hindi medium
- 'Harshit /Joyful Learning' weekly series
- CCT Booklet for classes 8th -10th (100 pages)

Reading Literacy English

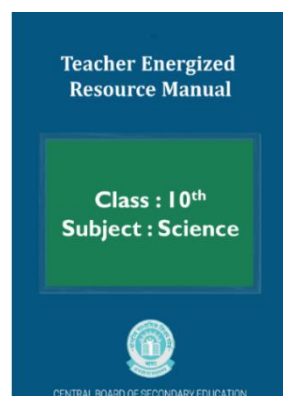
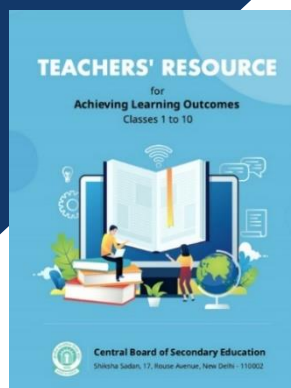
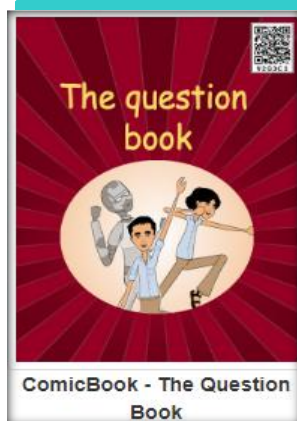
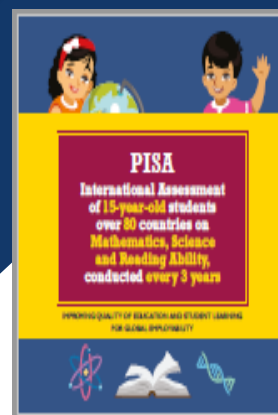
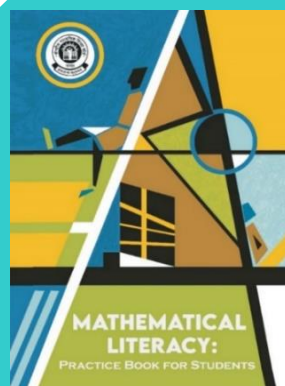
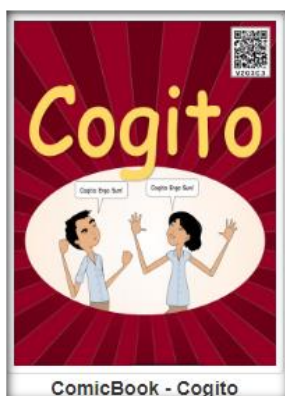
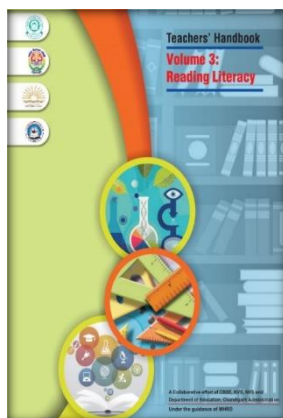
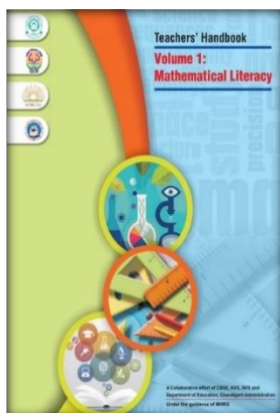
- 5 Handbooks/modules of Reading Literacy (classes 6 to 10)
- 3 Handbooks/modules of Reading Literacy for supplementary reader (classes 8 to 10)
- CCT Booklets for classes 8th, 9th and 10th (100 pages)

Reading Literacy Hindi

- 5 modules (Classes 6 to 10)
- 'Sankalp' Fortnightly Series
- Monthly CCT booklets for classes 6th- 8th and 9th-10th (January 2021 onwards)
- CCT Practice Booklets for classes 8th, 9th and 10th (100 pages)

CBSE Handbooks

- Vol.I Mathematical Literacy
- Vol.I Scientific Literacy
- Vol.I Reading Literacy
- Experiential Learning
- Joyful Teaching and Learning of Mathematics
- Art Integration
- Self-learning Resources
- Artificial Intelligence Integration Manual
- The Question Book
- Cogito
- 21st Century Skill Handbook
- Cyber Safety Manual
- Mathematical Literacy: Practice Book for Students
- PISA Primer
- Handbook of Joyful Learning



STATE COUNCIL OF EDUCATIONAL RESEARCH AND TRAINING (SCERT)
 Sector- 32, UT Chandigarh, Email id : scert-chd@nic.in, Phone No: 0172-2676011